



OIL & GAS ASSET
CLEARINGHOUSE

TRACE

OIL AND GAS



**Operated Working Interest
Package**

Caddo, Grady, Seminole Counties, OK

COMPREHENSIVE A&D SERVICES FOR THE OIL & GAS INDUSTRY

WWW.OGCLEARINGHOUSE.COM

Executive Summary

Bids Due
October 8, 2020

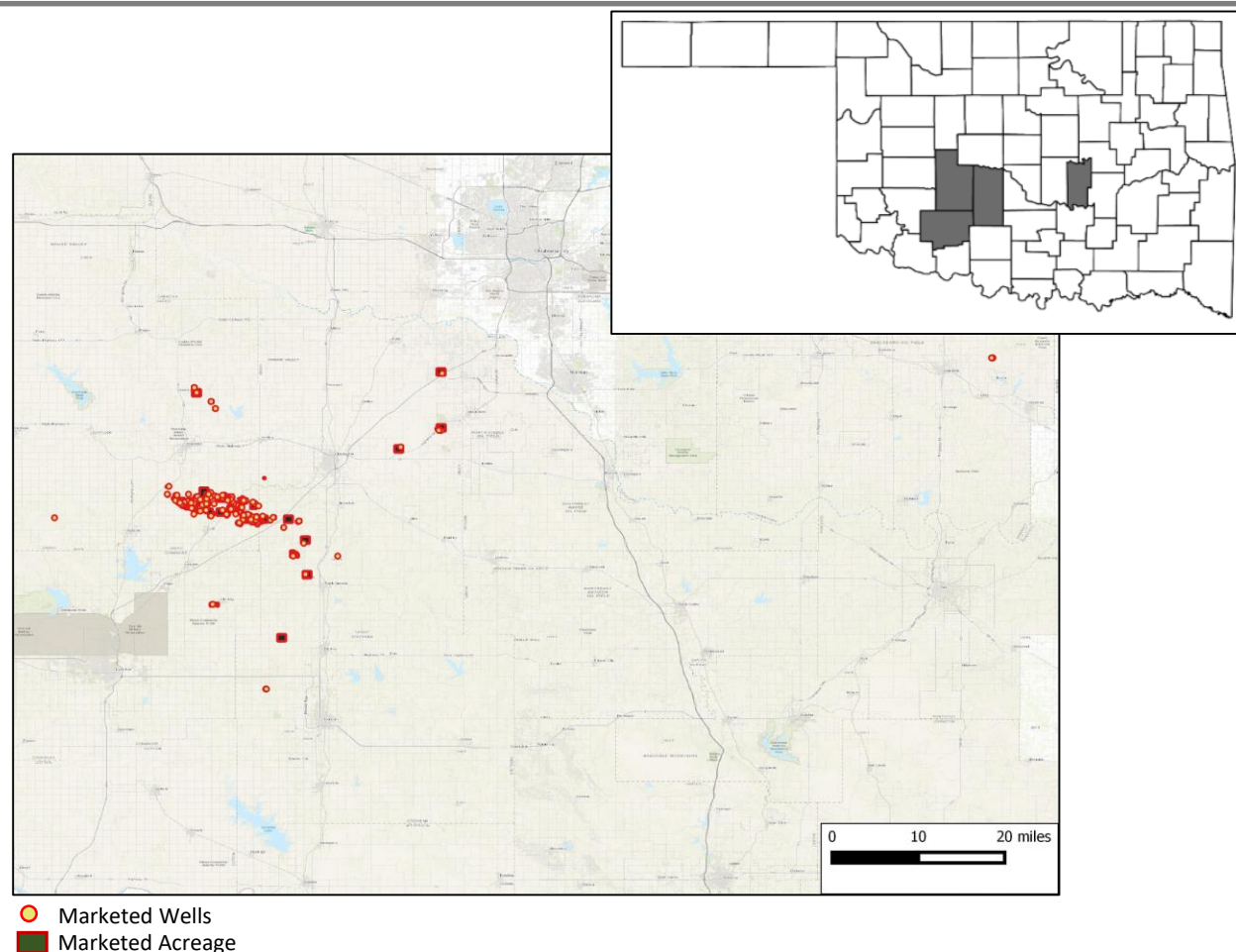
Private Sale

The Oil and Gas Asset Clearinghouse, LLC is partnering with Trace Oil & Gas to market an Operated Working Interest (WI) package that includes 273 wells in Caddo, Grady, Seminole, & Comanche Counties, Oklahoma

Asset Highlights

- Working Interest in 273 wells in Caddo, Grady, Seminole, & Comanche Counties, OK
- Producing from Fortuna, Medrano, etc. reservoirs
- Operated by Trace Oil & Gas & Cemoil (affiliate operator)
- 12,974 / 9,336 acres (gross / net)
- 133 / 93 avg. daily oil production (gross / net)
- 808 / 621 avg daily gas production (gross / net)
- \$51,897 / mo average net cash flow before workovers & overhead

Total oil & gas wells	236
Avg. WI / NRI	89 / 70%
Net Daily Production*	93 / 621 (bopd / mcf)
Avg. Net Cash Flow*	\$51,897 / mo



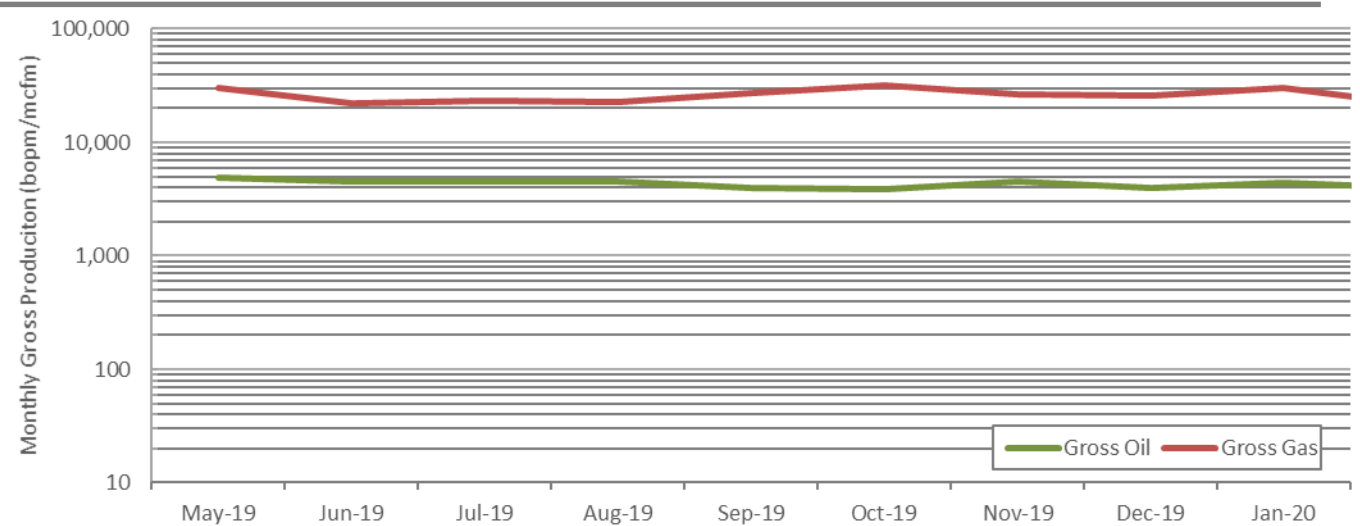
PDP & Cash Flow Summary

Bids Due
October 8, 2020

Private Sale

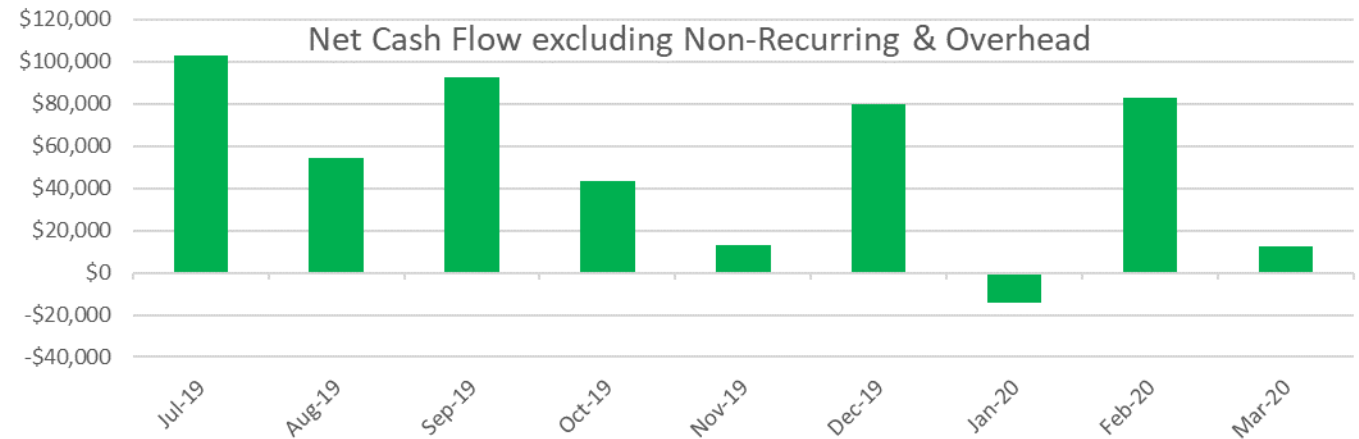
Monthly Production

- 201 oil wells, 35 gas wells
- 133 / 93 avg. daily oil production (gross / net)
- 808 / 621 avg daily gas production (gross / net)
- Producing from Fortuna, Medrano, etc reservoirs



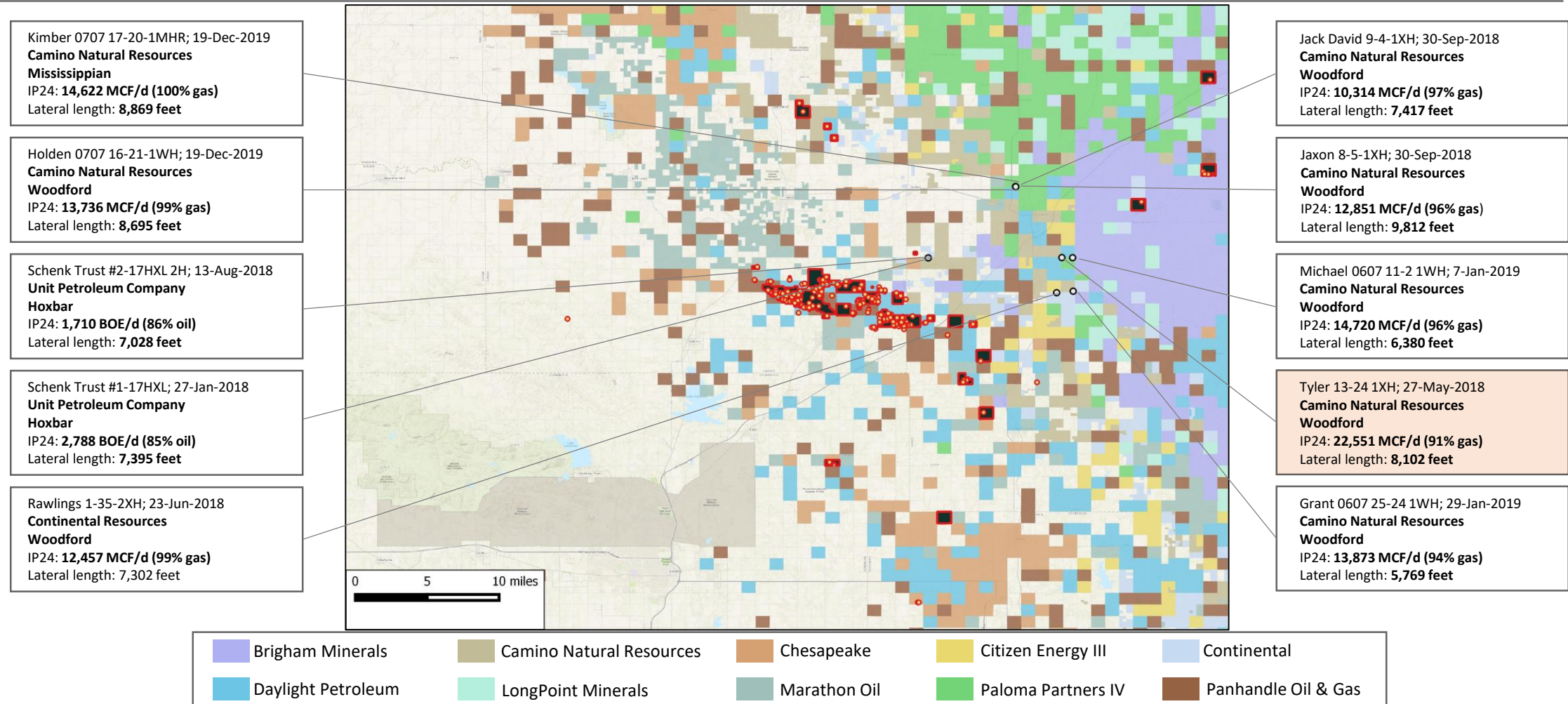
Monthly Cash Flow

- \$51,897 / mo average net cash flow before workovers & overhead*
- \$467k in cumulative cash flow before workovers & overhead*
- \$2,043 / active well LOE avg.*

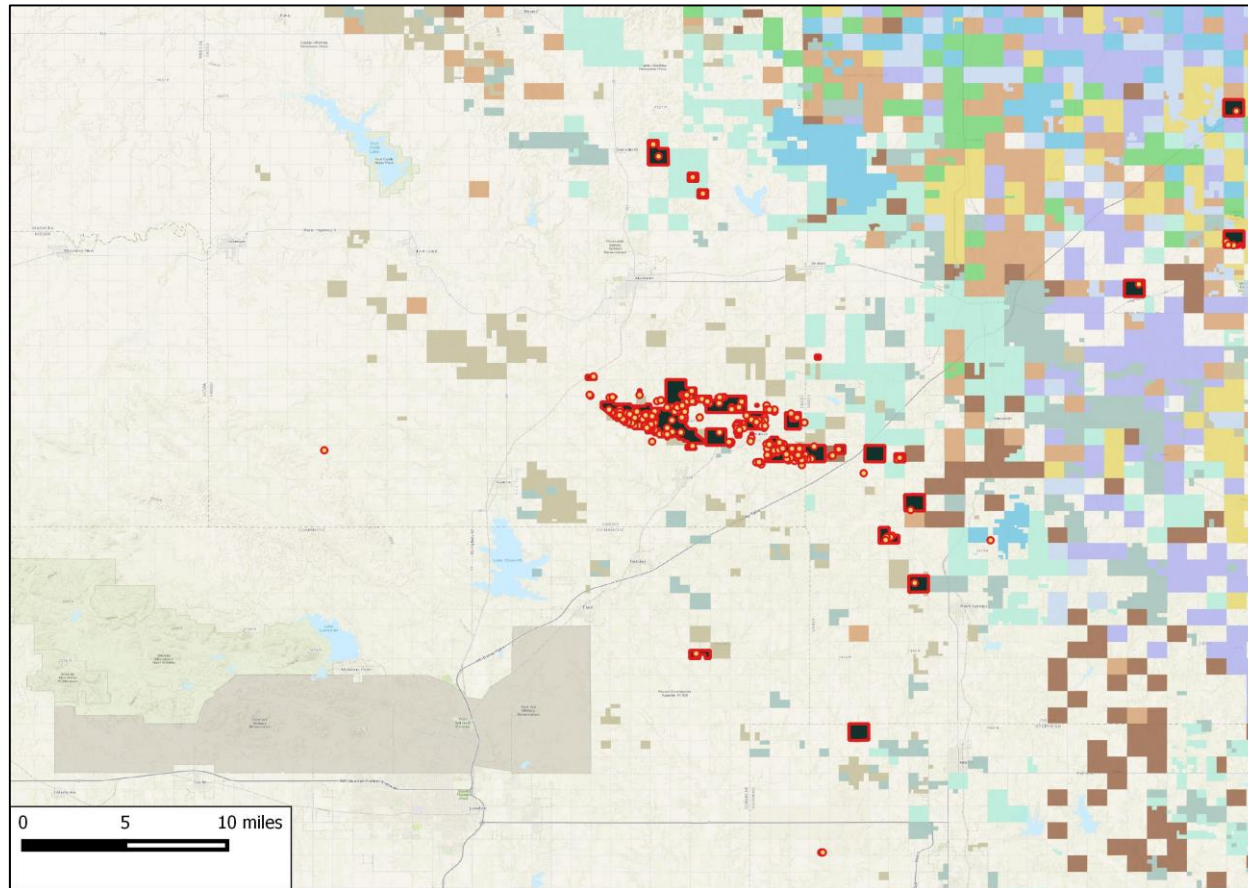


Operator Presence in the Vicinity

Camino Natural Resources' Tyler 13-24 1XH well, with a lateral length of 8,102 feet, achieved an average IP24 of 22,551 MCF/d in May 2018



Private Equity Presence in the Vicinity



LongPoint Minerals LLC

LongPoint Minerals has been backed by Canada Pension Plan Investment Board since May-2016

Commitment (\$): **\$831.6 million**

Brief: 58,000 net mineral acres and 70,400 net royalty acres with 4.1 MBOE/d production in Permian and Anadarko basins.



Citizen Energy III LLC

Citizen Energy III LLC received an initial equity commitment from Warburg Pincus in 2017 and subsequently received a follow-on commitment in Oct-2019

Commitment (\$): **\$815 million**

Brief: Assets in SCOOP/STACK; acquired primarily from Roan Resources in Oct-2019.



TRP Energy LLC

TRP Energy LLC received an equity commitment from Trilantic Capital Partners in May-2015. The company also received equity commitments from Bratenahl Capital Partners and Cohesive Capital Partners.

Commitment (\$): **\$250 million**

Brief: Acreage in Anadarko basin and Permian Midland.



CPPIB	Denham Capital	EnCap; Macquarie	Kayne Anderson	Lime Rock Partners
Mountain Capital	NGP Energy	Pearl Energy Investments	Warburg Pincus	Trilantic Capital Partners; Bratenahl Capital Partners; Cohesive Capital Partners

Historical Transactions

Camino Natural Resources LLC, Mach Resources LLC,
Bayou City Energy LP – Chesapeake Energy; Feb-18
Deal Type: **Property**
Deal Value: **\$500 million**
Assets: **238,000 net acres**
23,000 BOE/d (25% oil) production



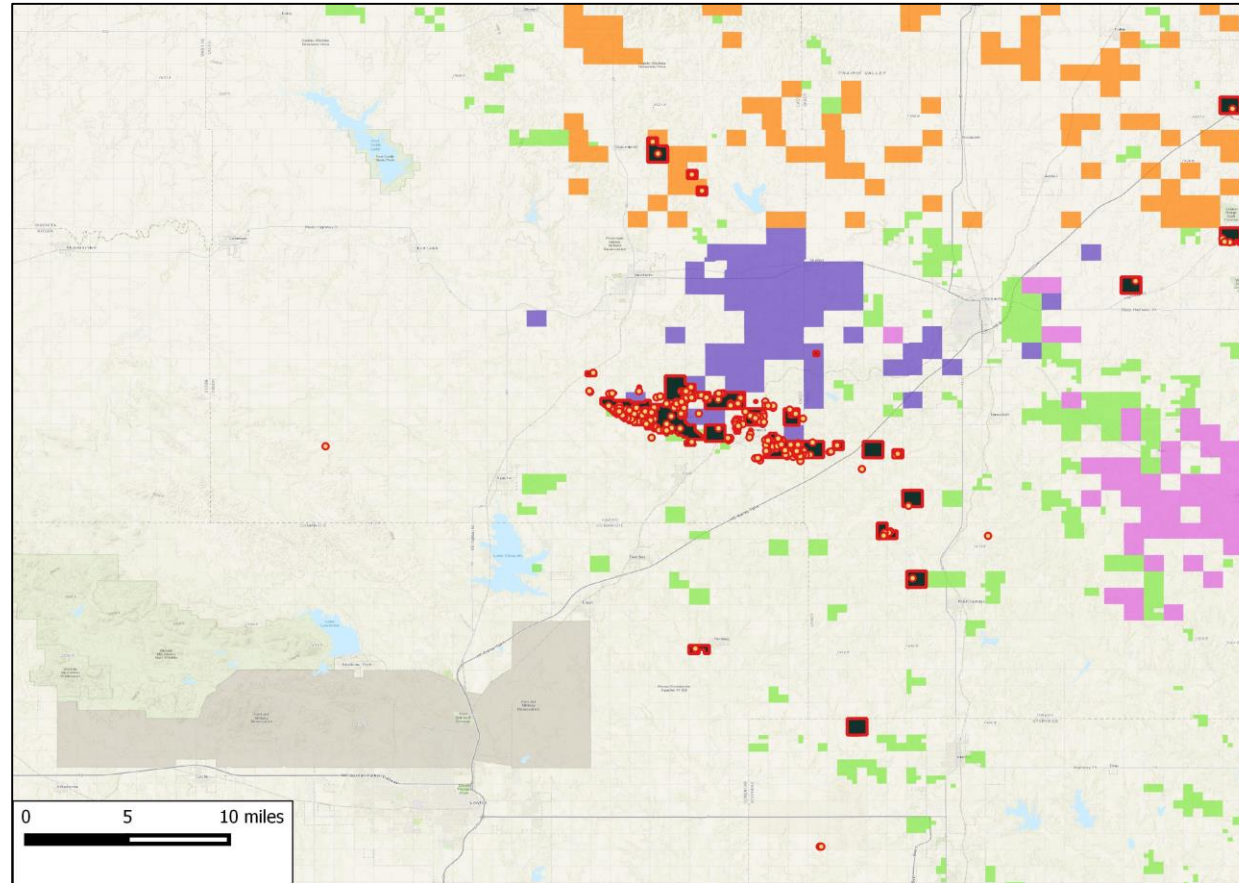
Zarvona Energy LLC – Tapstone Energy; May-18
Deal Type: **Property**
Deal Value: **\$60.2 million**
Assets: **13,000 net acres (100% HBP & 83% operated)**
12 MMcf/d (94% gas) production
172 gross wells (118 op / 54 non-op)



Casillas Petroleum Resource Partners LLC–
Sheridan Production Company LLC; Oct-18
Deal Type: **Property**
Deal Value: **\$260 million**
Assets: **29,600 net acres (100% HBP, 53% avg. WI)**
3.33 MBOE/d (29% oil)
1,500-plus gross drilling locations

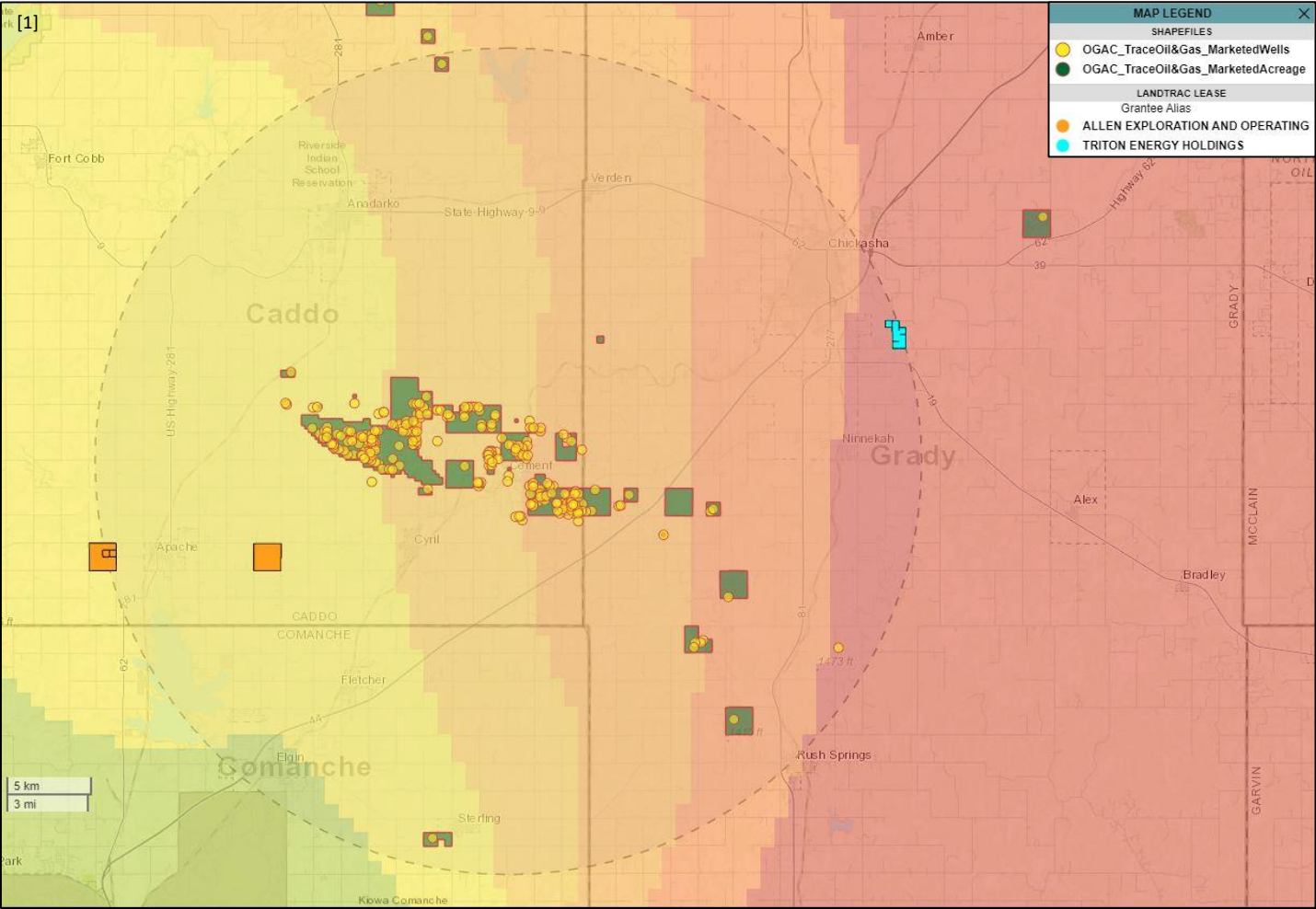


Red Wolf Operating LLC – Apache; Mar-19
Deal Type: **Property**
Deal Value: **\$245 million**
Assets: **56,000 net acres**
13.3 MBOE/d production
(50% gas, 33% NGLs & 17% oil)



Developmental Activity in the Vicinity

502 leases have been entered into within a 15-mile radius of the assets since January 2019



Footnotes: [1] Lease Activity heatmap for the last 6 months and landtrac leases within a 15-mile radius of the marketed assets during the last 6 months
[2] Leases within a 15-mile radius of the marketed assets

Sale Process

- Electronic data room available September 10, 2020
- Bids due October 8, 2020
- Bid instructions available in EDR

September

Su	M	T	W	Th	F	Sa
		1	2	3	4	5
6	7	8	9	10	11	12
13	14	15	16	17	18	19
20	21	22	23	24	25	26
27	28	29	30			

October

Su	M	T	W	Th	F	Sa
				1	2	3
4	5	6	7	8	9	10
11	12	13	14	15	16	17
18	19	20	21	22	23	24
25	26	27	28	29	30	31

 EDR Open
 Bids Due

For additional questions or information, please contact our team:

Bo Wanger
Business Development
BWanger@ogclearinghouse.com
(972) 702 - 1760

Tyler Post
Engineer
Tpost@ogclearinghouse.com
(903) 520 - 2278

Jeremy Beddo
Business Development
Jbeddo@ogclearinghouse.com
(405) 613 - 1227

Oil & Gas Asset Clearinghouse

Phone: (281) 873-4600

Email: sales@ogclearinghouse.com

Trace Oil & Gas ("Company") is selling Operated Working Interest in Caddo, Grady, Seminole, & Comanche Counties, OK. Oil & Gas Asset Clearinghouse, LLC ("Clearinghouse") is the exclusive technical, marketing, and transaction advisor for this sale. The Company and Clearinghouse make no representations or warranties, either express or implied, as to the accuracy or completeness of this information or its suitability for any purpose. The sales process contemplated herein is not exclusive. The Company and Clearinghouse reserve the right to withdraw all or any portion of the assets or change all or any terms of this sales process at any time without notice to any potential purchaser.