

The background of the slide features two faint, grey silhouettes of oil field equipment. On the left is a tall, lattice-structured derrick or drilling rig. On the right is a pumpjack, showing its characteristic walking beam and counterweight mechanism. The overall theme is oil and gas industry infrastructure.

OIL & GAS ASSET  
**CLEARINGHOUSE**

# IPR Energy Partners

**Operated Working Interest  
Package**

**Multiple Counties, Texas**

**COMPREHENSIVE A&D SERVICES FOR THE OIL & GAS INDUSTRY**

**[WWW.OGCCLEARINGHOUSE.COM](http://WWW.OGCCLEARINGHOUSE.COM)**

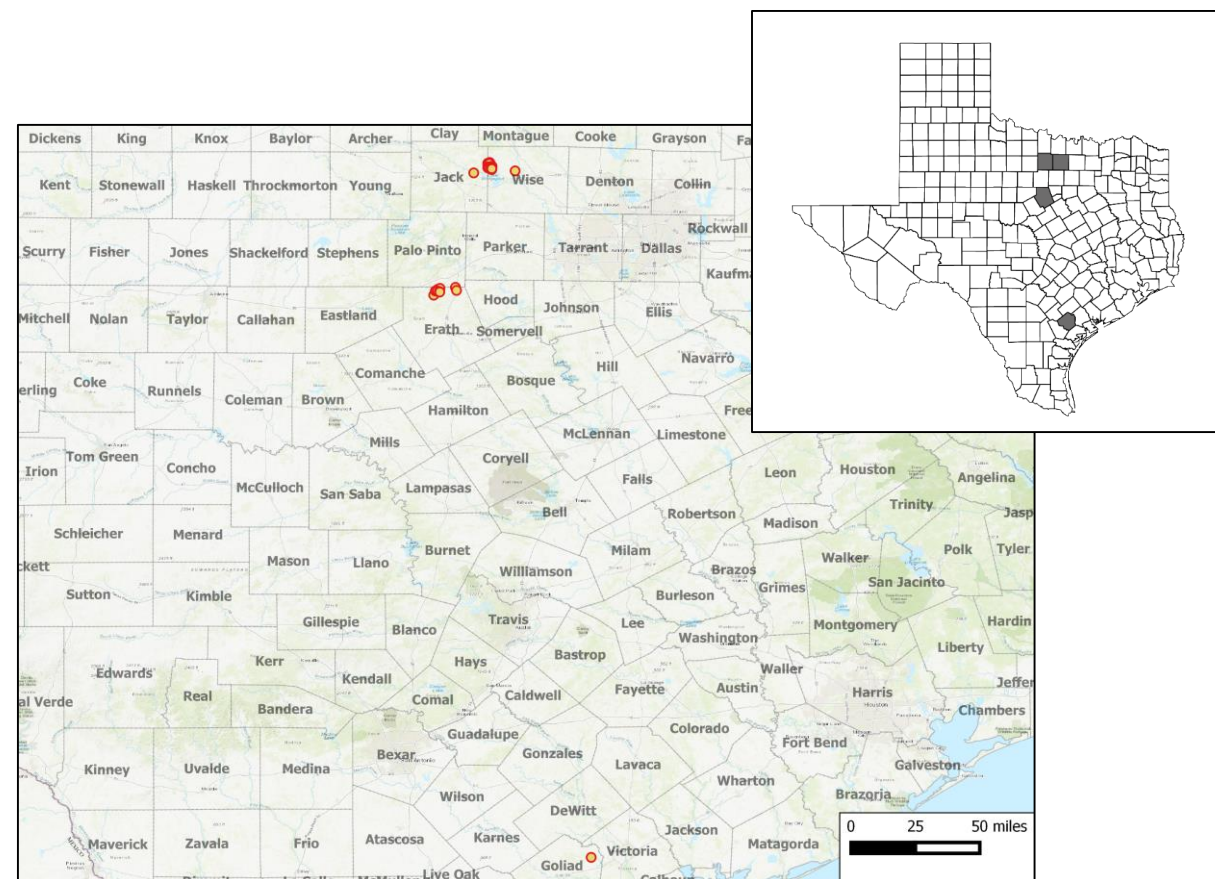
# Executive Summary

The Oil and Gas Asset Clearinghouse, LLC is partnering with IPR Energy Partners to market an operated working interest package that includes 57 wells in Wise, Erath, Jack, and Goliad Counties, Texas.

## Asset Highlights

- Operated working interest in 57 wells in Wise, Erath, Jack, and Goliad Counties, Texas
- Producing from the Barnett Shale, Strawn, Marble Falls, Big Saline, Caddo Lime, and Atoka/Bend Conglomerate formations
- Operated by IPR Energy Partners
- 3,700 / 3,625 acres (gross / net)
- 6 / 4 avg. daily oil production (gross / net)
- 247 / 162 avg daily gas production (gross / net)
- 140' of un-stimulated Caddo Lime and Conglomerate on Morris A and C leasehold
- 2,700 contiguous acres HBP on Morris A and C leasehold with 3-D seismic coverage

Total producing wells	30
WI / NRI	98 / 81 %
Net Daily Production	4 / 162 (bopd / mcf/d)
Acreage	3,700 / 3,625 (gross / net)



○ Marketed Wells



Operator Presence in the Vicinity of the North Texas Properties

Devon Energy’s Brown Agnes (AW) 8H, with a lateral length of 4,404 feet, achieved an average IP24 of 2,052 MCF/d in April 2019

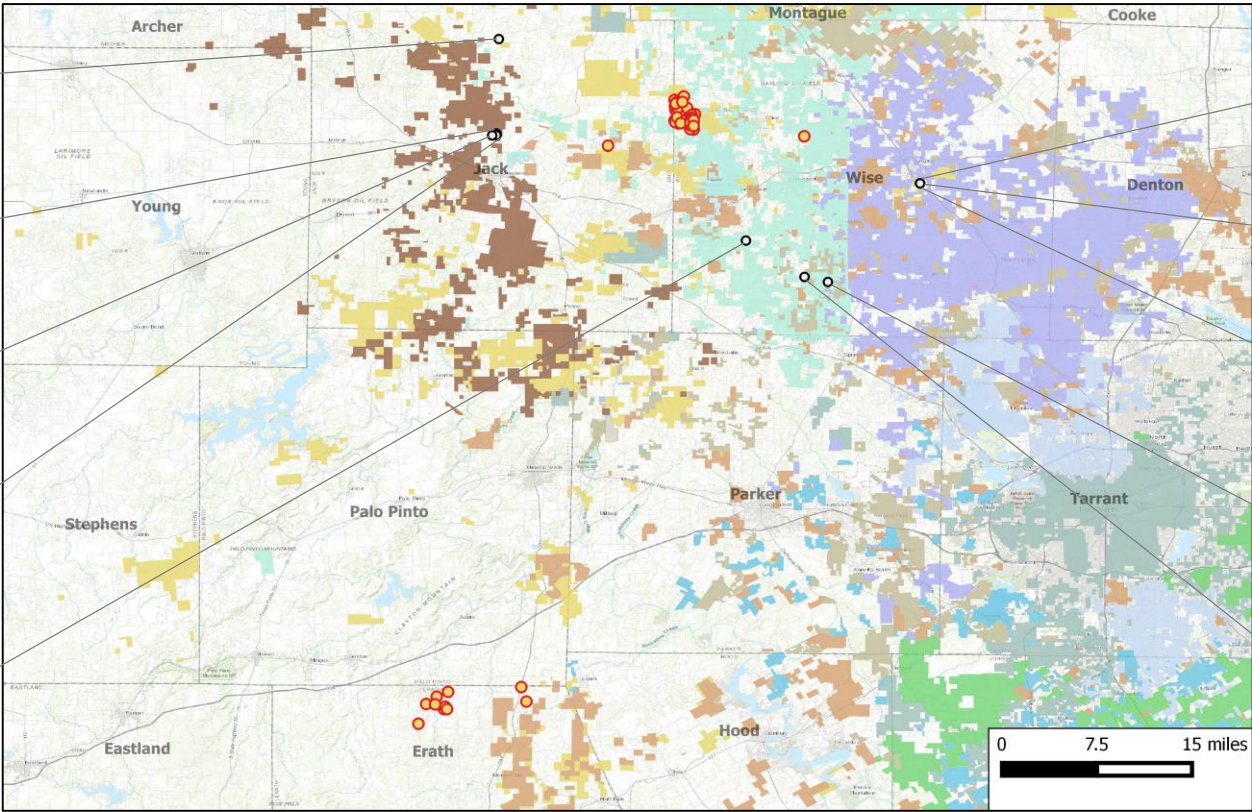
Big Horn 'B' Lease 4; 4-Sep-2018  
**Legacy Exploration**  
**Marble Falls**  
IP24: 450 MCF/d (67% gas)  
Lateral length: 228 feet

Worthington O 1; 18-Feb-2019  
**Oakridge Oil And Gas**  
**Gas**  
IP24: 128 BOE/d (100% oil)  
Lateral length: 16 feet

Rumage 11; 24-Apr-2019  
**White Knight Production**  
**Gas**  
IP24: 192 BOE/d (100% oil)  
Lateral length: Undisclosed

Worthington O 2; 22-Feb-2019  
**Oakridge Oil And Gas**  
**Gas**  
IP24: 106 BOE/d (100% oil)  
Lateral length: Undisclosed

Kaker Heirs 1H; 13-Jan-2018  
**Lakota Energy**  
**Barnett Shale**  
IP24: 1,110 MCF/d (100% gas)  
Lateral length: 3,795 feet



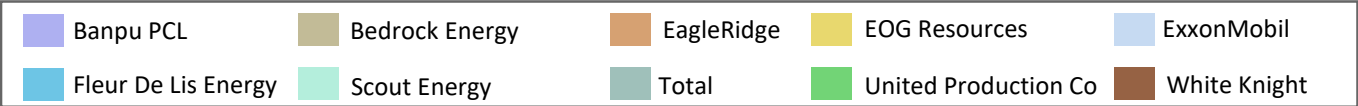
Brown, Agnes (AW) 8H; 25-Apr-2019  
**Devon Energy**  
**Barnett Shale**  
IP24: 2,052 MCF/d (100% gas)  
Lateral length: 4,404 feet

Brown, Agnes (AW) 6H; 24-Apr-2019  
**Devon Energy**  
**Barnett Shale**  
IP24: 2,922 MCF/d (100% oil)  
Lateral length: 4,839 feet

Brown, Agnes (AW) 7H; 18-Apr-2019  
**Devon Energy**  
**Barnett Shale**  
IP24: 1,530 MCF/d (100% gas)  
Lateral length: 4,131 feet

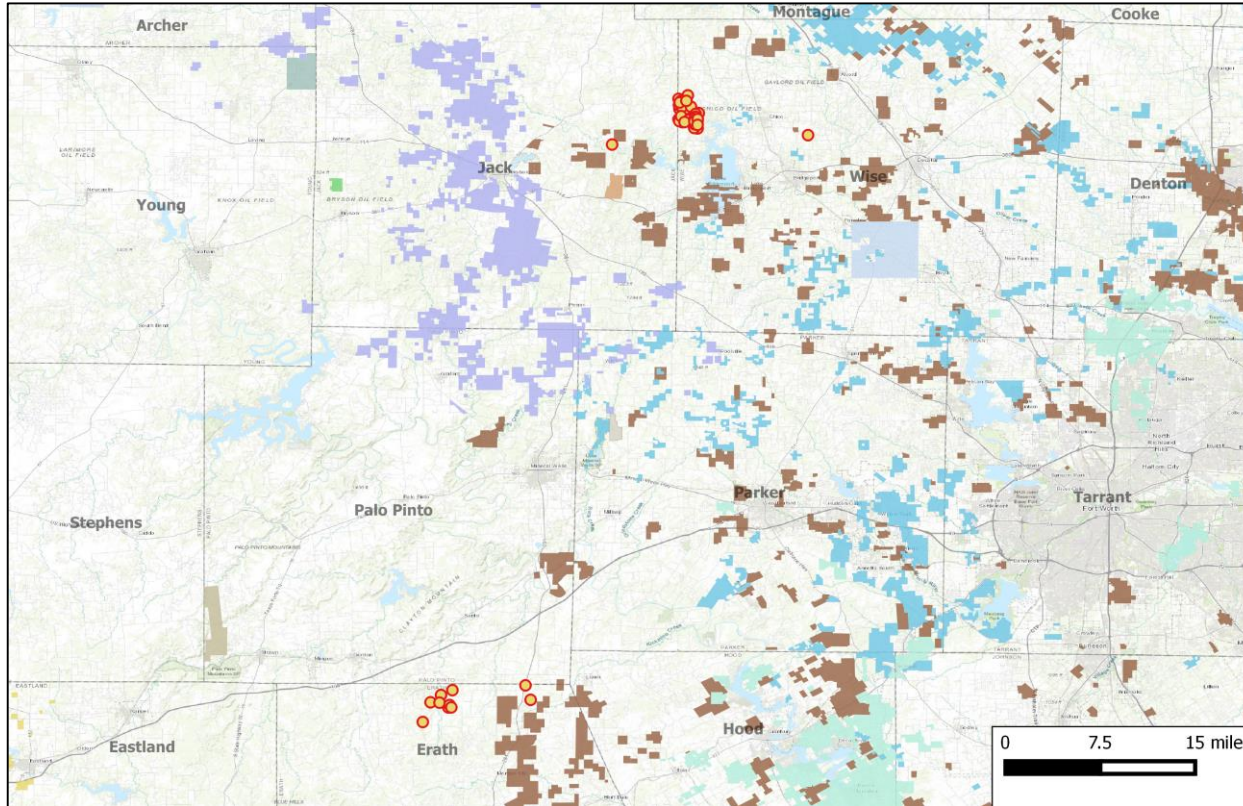
Gentry 2H; 18-May-2019  
**Texsol Operating Company**  
**Barnett Shale**  
IP24: 1,800 MCF/d (88% oil)  
Lateral length: 4,004 feet

Kelley Heirs 1H; 16-Jan-2018  
**Lakota Energy**  
**Barnett Shale**  
IP24: 1,050 MCF/d (100% gas)  
Lateral length: 2,762 feet



# IPR Energy Partners

## Private Equity Presence in the Vicinity of the North Texas Properties



### Pegasus Resources LLC

Pegasus Resources LLC received an equity commitment from EnCap Investments LP in Dec-2017. The company received a follow-on equity commitment in Feb-2019 from the same sponsor.

Commitment (\$): **\$600 million**

Brief: Mineral and royalty interests in Permian Delaware and Midland basins.



### CrownRock Minerals LP

CrownRock Minerals LP, a joint venture of Lime Rock Partners and CrownQuest Operating, received equity commitment from Lime Rock Partners in Mar-2016. The company received a follow-on equity commitment from NB Private Equity Partners Ltd in Jun-2018.

Commitment (\$): **\$400 million**

Brief: Focused on royalty and mineral interests primarily in Permian region.

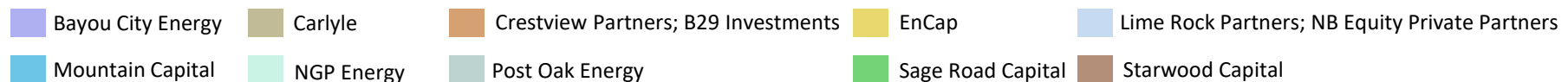


### EagleRidge Energy LLC

EagleRidge Energy LLC received an investment from Starwood Capital Group in Jun-2015.

Commitment (\$): **\$110 million**

Brief: Operates 1,400+ wells on 184,000 gross acres across Barnett Shale.





## Historical Transactions

Bedrock Energy – Harvest Oil & Gas; Jul-19  
Deal Type: **Property**  
Deal Value: **\$72 million**  
Assets: **~32,000 non-operated net acres (100% HBP)**  
**55.6 MMcfe/d Q1-2019 production**



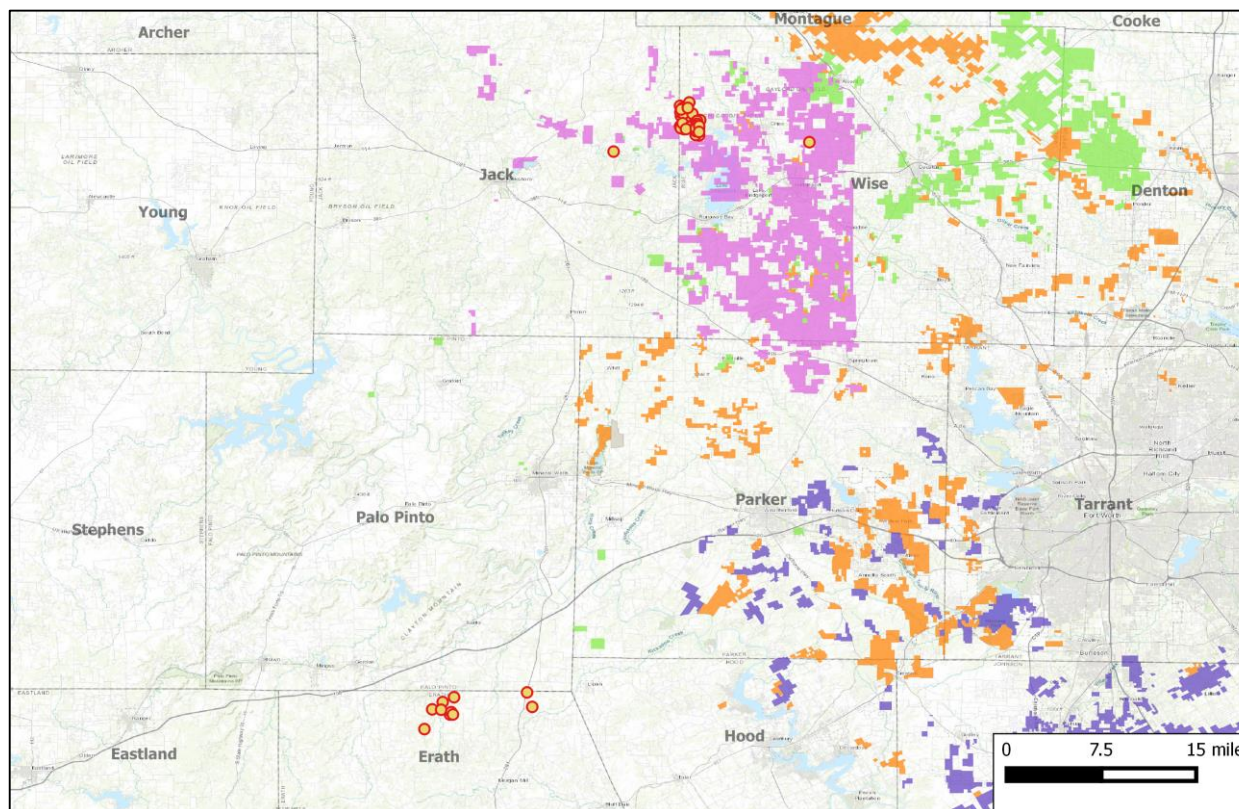
Fleur de Lis Energy – Devon Energy; Mar-18  
Deal Type: **Property**  
Deal Value: **\$553 million**  
Assets: **146,000 net acres, 100% HBP**  
**200 MMcfe/d (81% gas & 19% NGLs)**  
**current production**



Scout Energy Partners – Devon Energy; Nov-18  
Deal Type: **Property**  
Deal Value: **\$50 million**  
Assets: **100,000 net acres**  
**24 MMcfe/d**



Lime Rock – ConocoPhillips; Aug-18  
Deal Type: **Property**  
Deal Value: **\$230 million**  
Assets: **114,104 net acres total in package**  
**(92% avg. WI, 96% HBP)**  
**54 MMcfe/d (55% gas, 45% NGLs)**



# IPR Energy Partners

## Developmental Activity in the Vicinity of the North Texas Properties

123 drilling permits have been approved within a 25-mile radius of the marketed assets since January 2019

