



OIL & GAS ASSET
CLEARINGHOUSE

CLAY
PETROLEUM

**Operated Working Interest
Package**

Gray & Sherman Counties, Texas

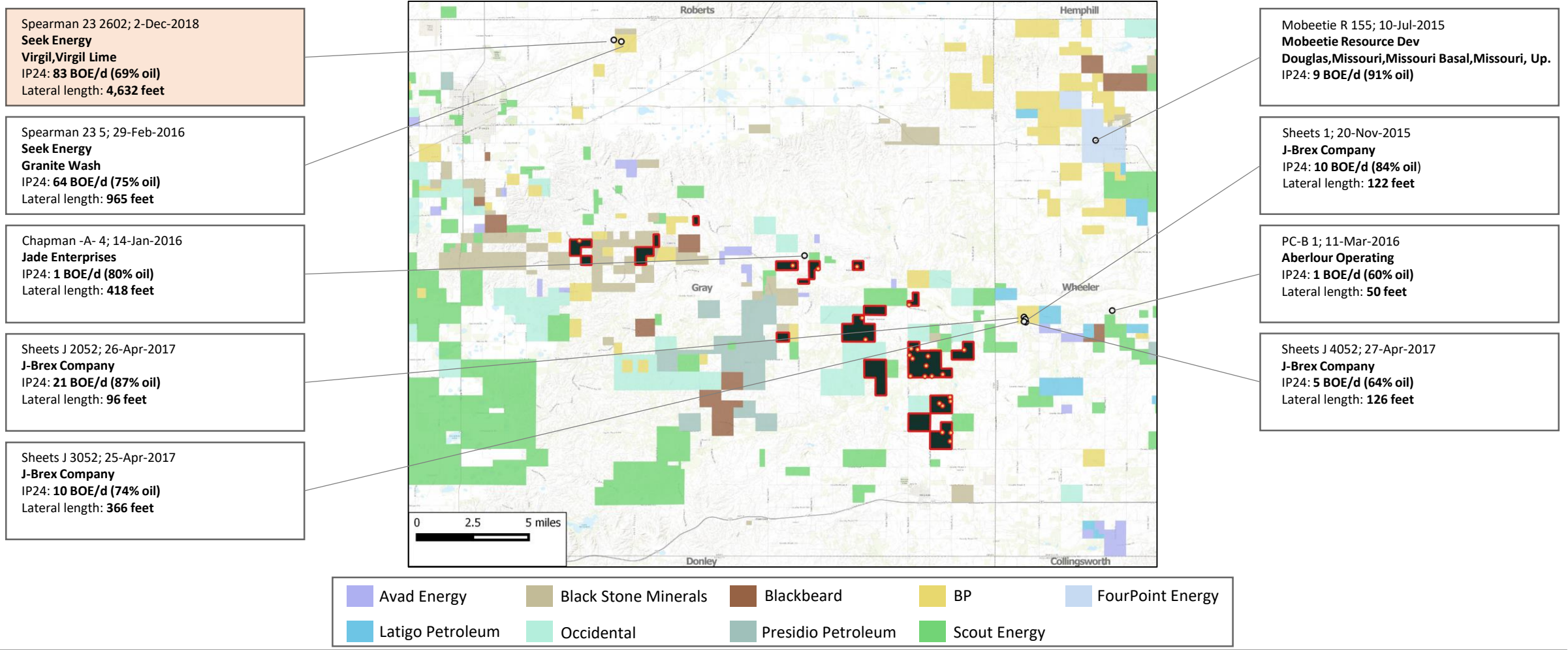
COMPREHENSIVE A&D SERVICES FOR THE OIL & GAS INDUSTRY

WWW.OGCLEARINGHOUSE.COM

Clay Petroleum

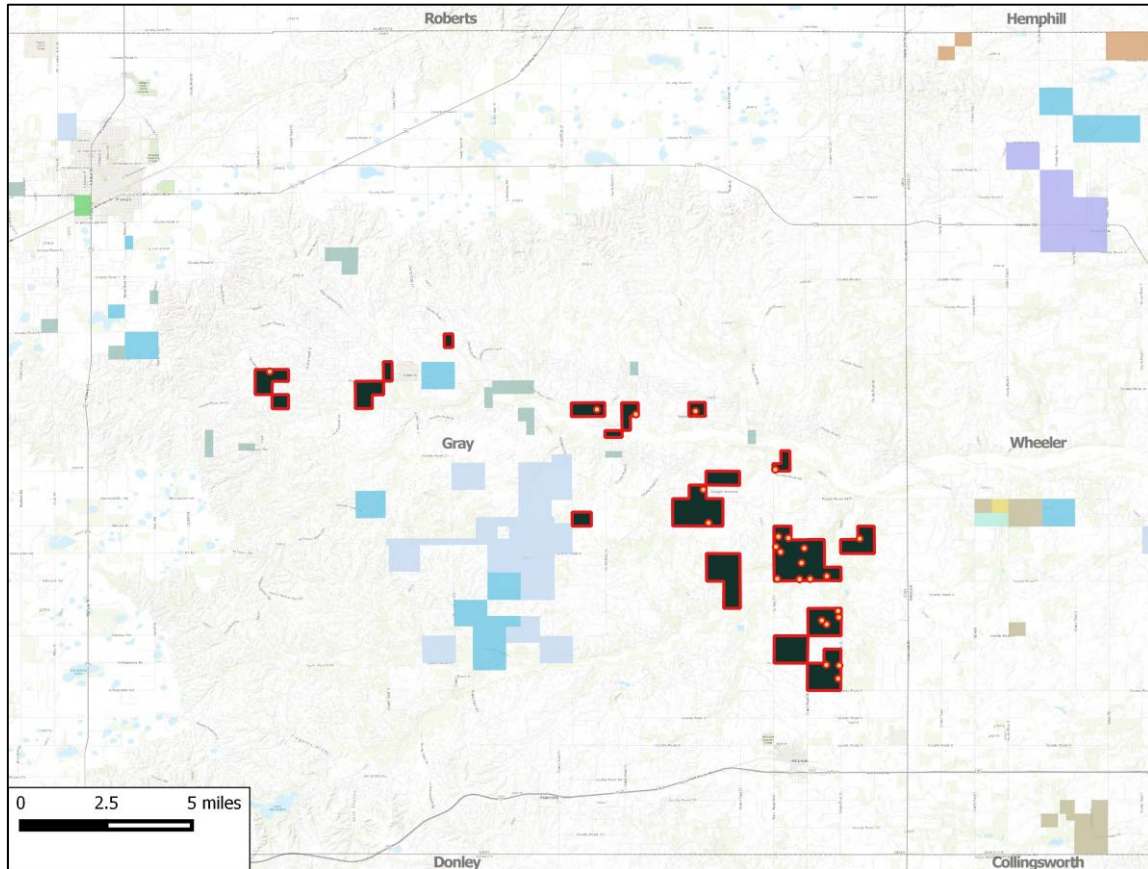
Operator Presence in the Vicinity

Seek Energy's Spearman 23 2602 well, with a lateral length of 4,632 feet, achieved an average IP24 of 83 BOE/d in December 2018



Clay Petroleum

Private Equity Presence in the Vicinity



Presidio Petroleum LLC

Presidio Investment Holdings LLC and Morgan Stanley Energy Partners formed a strategic partnership in Jun-2018, whereby Morgan Stanley made a majority equity investment in Presidio Petroleum LLC.

Commitment (\$): **Undisclosed**

Brief: Anadarko Basin focused company



Blackbeard Operating LLC

Blackbeard Operating LLC received equity commitment from NGP Energy Capital Management in 2014.

Commitment (\$): **Undisclosed**

Brief: Assets in Permian, Midcontinent, Gulf Coast and Ark-La-Tex

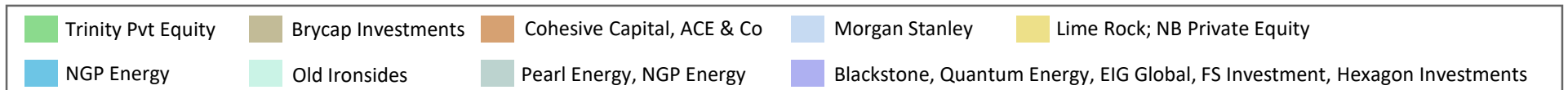


Avad Energy Partners LLC

AVAD Energy Partners LLC received an equity commitments from Pearl Energy Investments, NGP Energy Capital Management, and its management team in Jan-2017.

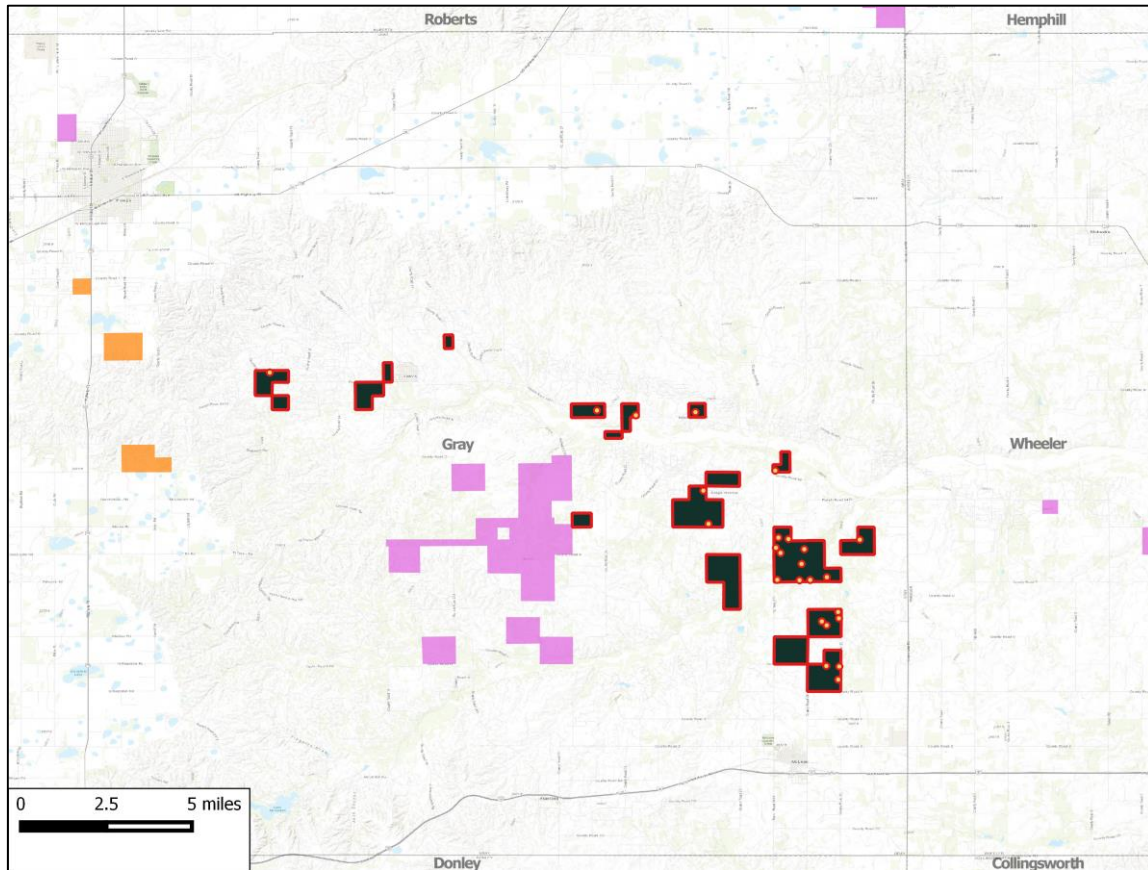
Commitment (\$): **\$77.5 million**

Brief: Focused on acquiring and developing conventional oil and natural gas properties



Clay Petroleum

Historical Transactions



Contango Oil & Gas – Will Energy Corp; Sep-19
Deal Type: **Property**
Deal Value: **\$23 million**
Assets: **159,872 net acres (95% HBP) which includes 147,312 in Texas Panhandle**
1.4 MBOE/d (34% liquids, 75% operated) of current Production

Presidio Petroleum Co – Apache; Jul-19
Deal Type: **Property**
Deal Value: **\$367 million**
Assets: **~435,000 net acres (~90% HBP)**
25.9 MBOE/d (50% gas, 30% NGLs, 20% oil, 85% operated) of net Production

Clay Petroleum

Developmental Activity in the Vicinity

