



OIL & GAS ASSET
CLEARINGHOUSE



ATCHLEY RESOURCES, INC

**Overriding Royalty Interest
Package**

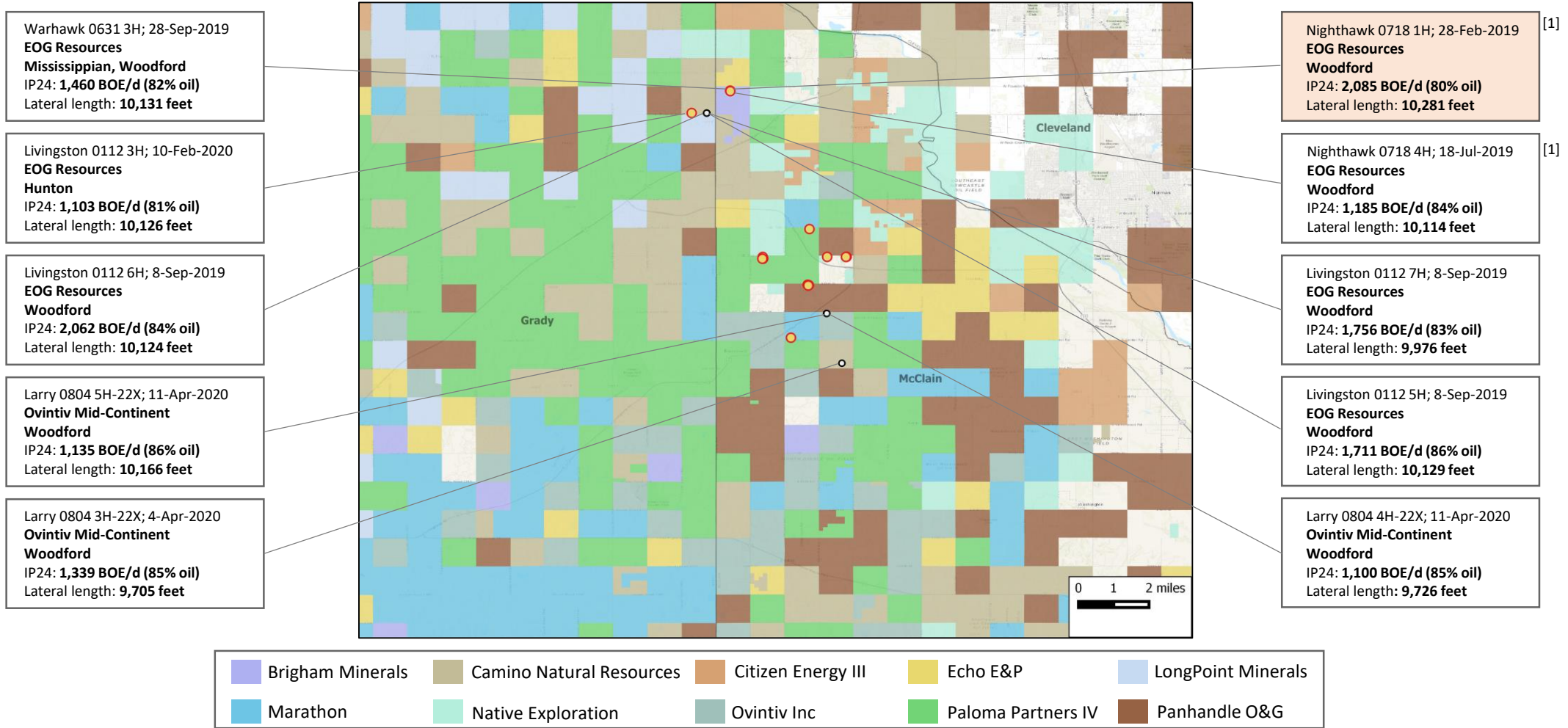
McClain & Grady Counties, OK

COMPREHENSIVE A&D SERVICES FOR THE OIL & GAS INDUSTRY

WWW.OGCLEARINGHOUSE.COM

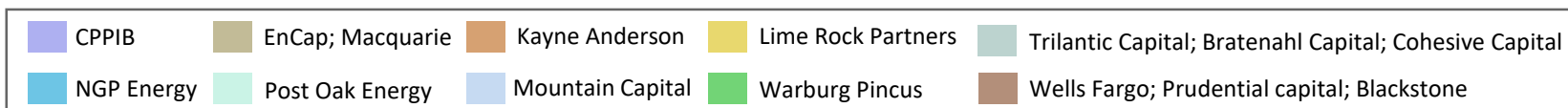
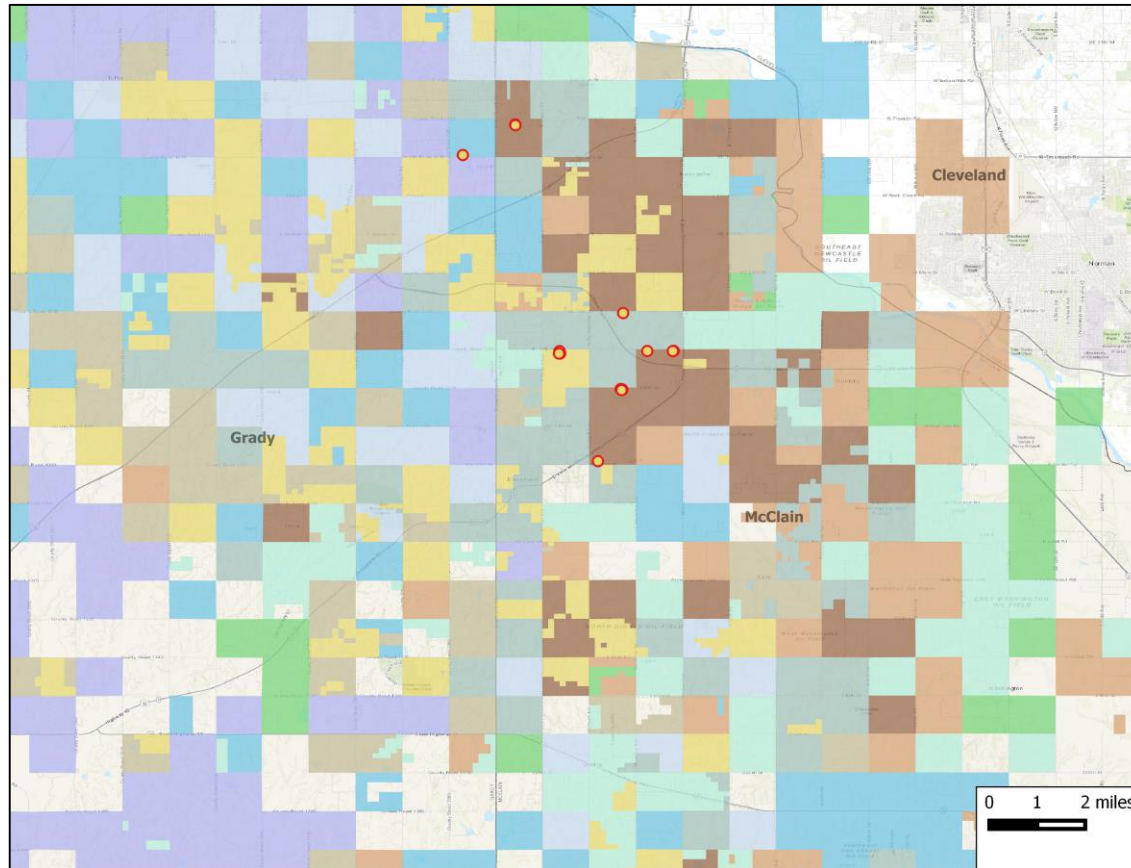
Operator Presence in the Vicinity

EOG Resource's Nighthawk 0718 1H well, with a lateral length of 10,281 feet, achieved an average IP24 of 2,805 BOE/d in February 2019



Atchley Resources

Private Equity Presence in the Vicinity



LongPoint Minerals LLC

LongPoint Minerals LLC received an equity commitments from Canada Pension Plan Investment Board and other investors during May-2016 to Apr-2017
 Commitment (\$): **\$831.6 million**
 Brief: 58,000 net mineral acres and 70,400 net royalty acres with 4.1 MBOE/d production in Permian and Anadarko basins.



Citizen Energy III LLC

Citizen Energy III LLC is backed by Warburg Pincus
 Commitment (\$): **\$815 million**
 Brief: Assets in SCOOP/STACK; acquired from Roan Resources in Oct-2019.



TRP Energy LLC

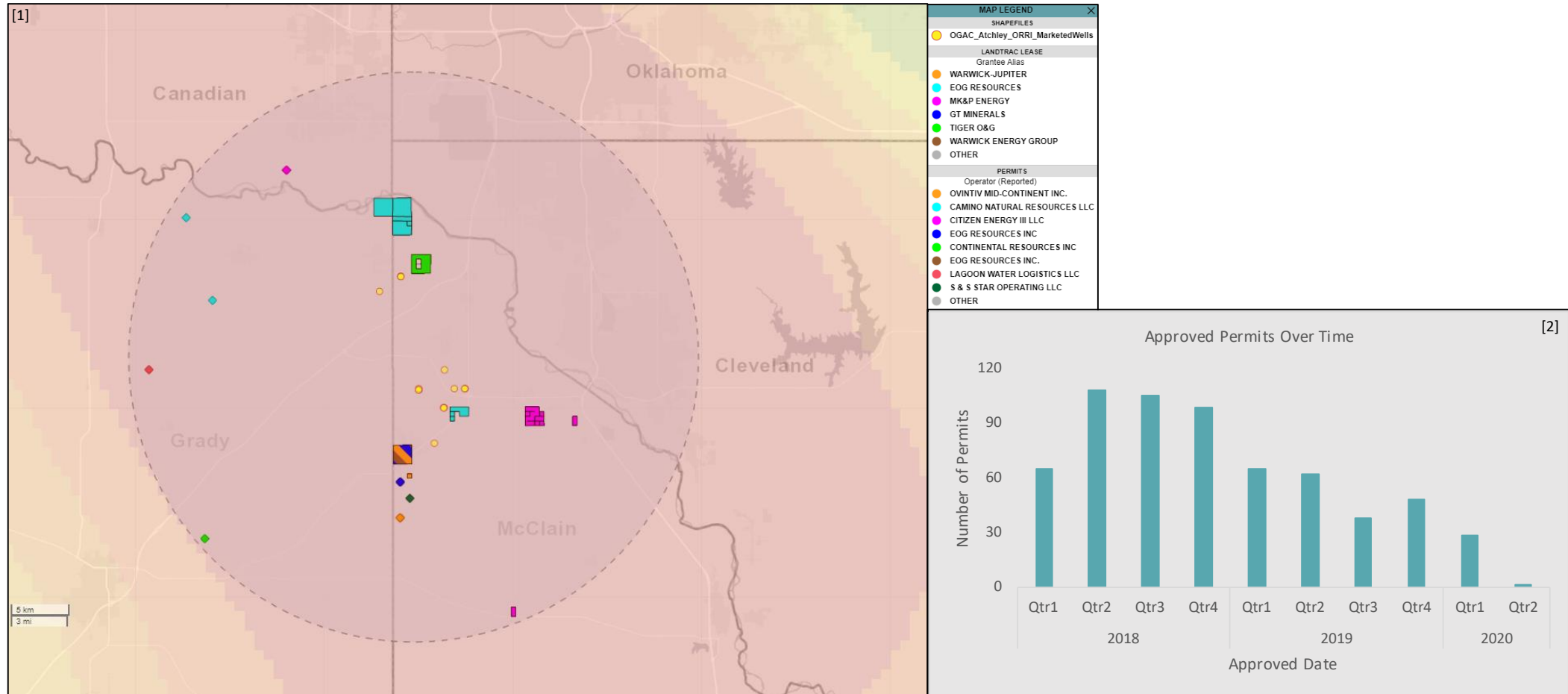
TRP Energy LLC received an equity commitment of \$250 million from Trilantic Capital Partners in May-2015. The company is also backed by Bratenahl Capital Partners and Cohesive Capital Partners
 Commitment (\$): **\$250 million**
 Brief: Acreage in Anadarko basin and Permian Midland.



Atchley Resources

Developmental Activity in the Vicinity

242 drilling permits have been approved within a 15-mile radius of the marketed assets since January 2019



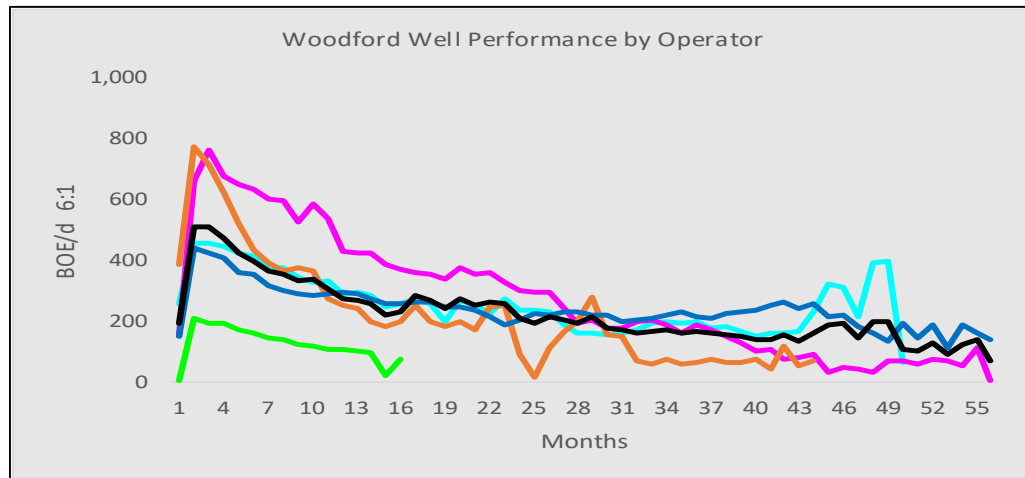
Footnotes: [1] Lease Activity heatmap for the last 3 months, approve permits and landtrac leases within a 15-mile radius of the marketed wells during the last 3 months
 [2] Permits approved within a 15-mile radius of the marketed assets

Atchley Resources

Type Curves

Woodford Well Performance by Operator

- 237 wells Woodford wells drilled since Jan-2015 in 15 mi radius
- Avg. 0.0484% ORRI
- 540 / 1,200 initial gross production rates (bopd / mcf/d)
- \$8.3k PV10 per PUD



— Average

