



OIL & GAS ASSET
CLEARINGHOUSE



GEB Energy

**Operated Working Interest
Package**

Calcasieu Parish, Louisiana

COMPREHENSIVE A&D SERVICES FOR THE OIL & GAS INDUSTRY

WWW.OGCLEARINGHOUSE.COM

Executive Summary

Bids Due
July 9, 2020

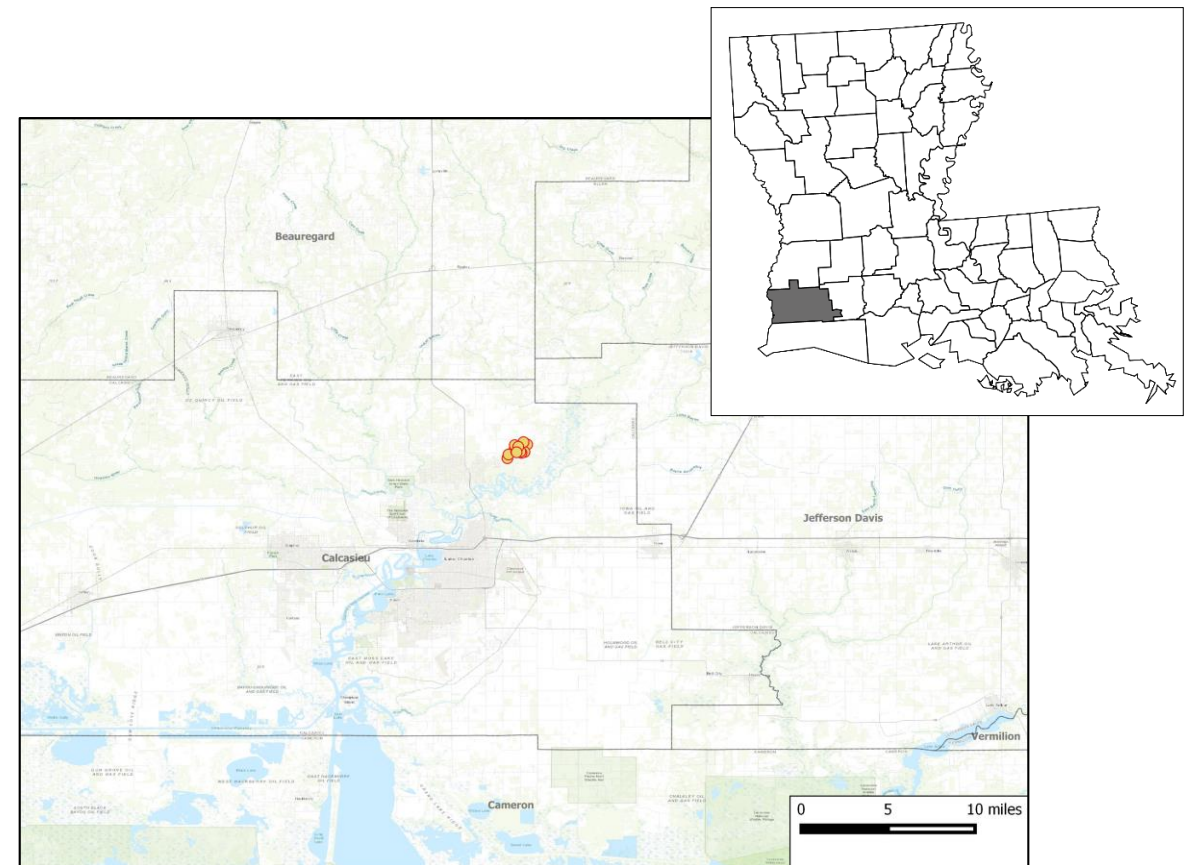
Private Sale

The Oil and Gas Asset Clearinghouse, LLC is partnering with GEB Energy to market an operated working interest package that includes 17 wells in Calcasieu Parish, Louisiana.

Asset Highlights

- 6 oil, 8 gas, and 3 SWD wells in Calcasieu Parish, Louisiana
- Producing from the Upper Hackberry formation
- Operated by GEB Energy
- 18 / 14 bopd avg. daily oil production (gross / net)
- 78 / 60 mcf/d avg daily gas production (gross / net)
- \$22,000 / mo average net cash flow (4th Quarter 2019)
- \$950,000 evaluation of PDNP behind pipe reserves (PV-10)

Total producing wells	3
WI / NRI	100 / 78 %
Net Daily Production*	14 / 60 (bopd / mcf/d)
Avg. Net Cash Flow*	\$22,000 / mo



● Marketed Operated Wells

Operator Presence in the Vicinity

Fontainebleau Operating's WX A RB SUA Steve Barrow well achieved an average IP24 of 316 BOE/d in May-2018

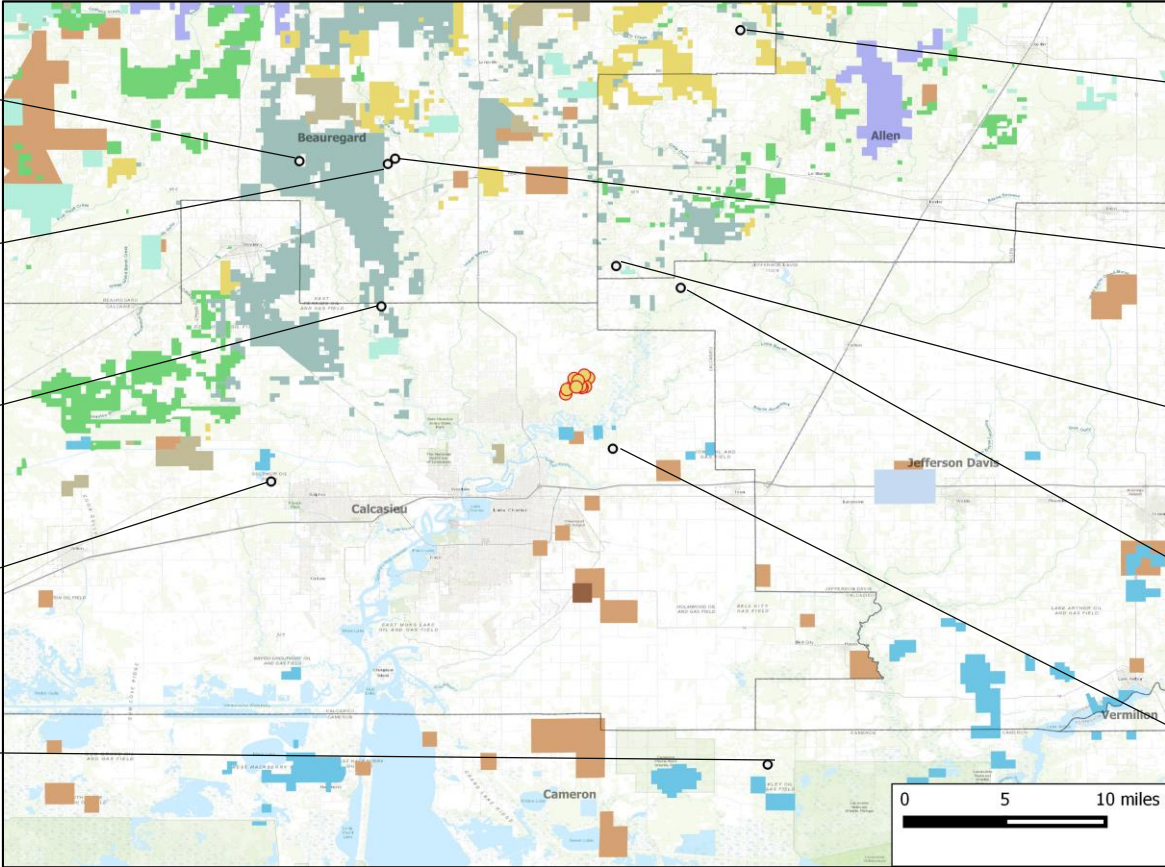
WX A RA SUA; Mineral Res 21 1; 6-May-2018
Fontainebleau Operating
WX A
IP24: **208 BOE/d (100% oil)**
Lateral length: **34 feet**

WX A RB SUA; Donald Barrow 20 001-ALT; 25-Sep-2018
Fontainebleau Operating
WX A
IP24: **65 BOE/d (85% oil)**
Lateral length: **20 feet**

HBY RG SUA; Min Res Dev 001-ALT; 28-Nov-2018
Conn Energy Group
HBY
IP24: **109 BOE/d (83% oil)**
Lateral length: **42 feet**

5200 RA SUA; Breaux ETAL 1; 30-Sep-2018
Cypress Production
5200
IP24: **0.89 MMcfe/d (99% gas)**
Lateral length: **856 feet**

VUB; CAM Parish School BD 16 2; 27-Nov-2018
United World Energy Corporation
VUB;
IP24: **80 BOE/d (100% oil)**



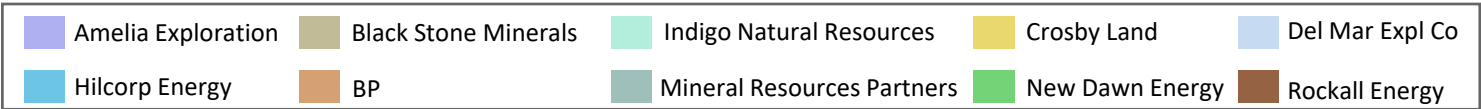
CF RB SUA; B H Timber INC 1; 17-Jan-2019
Will-Drill Production Co
Non Unitized Cockfield
IP24: **172 BOE/d (70% oil)**

WX A RB SUA; Steve Barrow 20 002-ALT; 3-May-2018
Fontainebleau Operating
WX A
IP24: **316 BOE/d (100% oil)**
Lateral length: **18 feet**

HBY RF SUA; Rannel Rae TIMS 1; 14-Aug-2019
Zachry Exploration
HBY
IP24: **121 BOE/d (84% oil)**

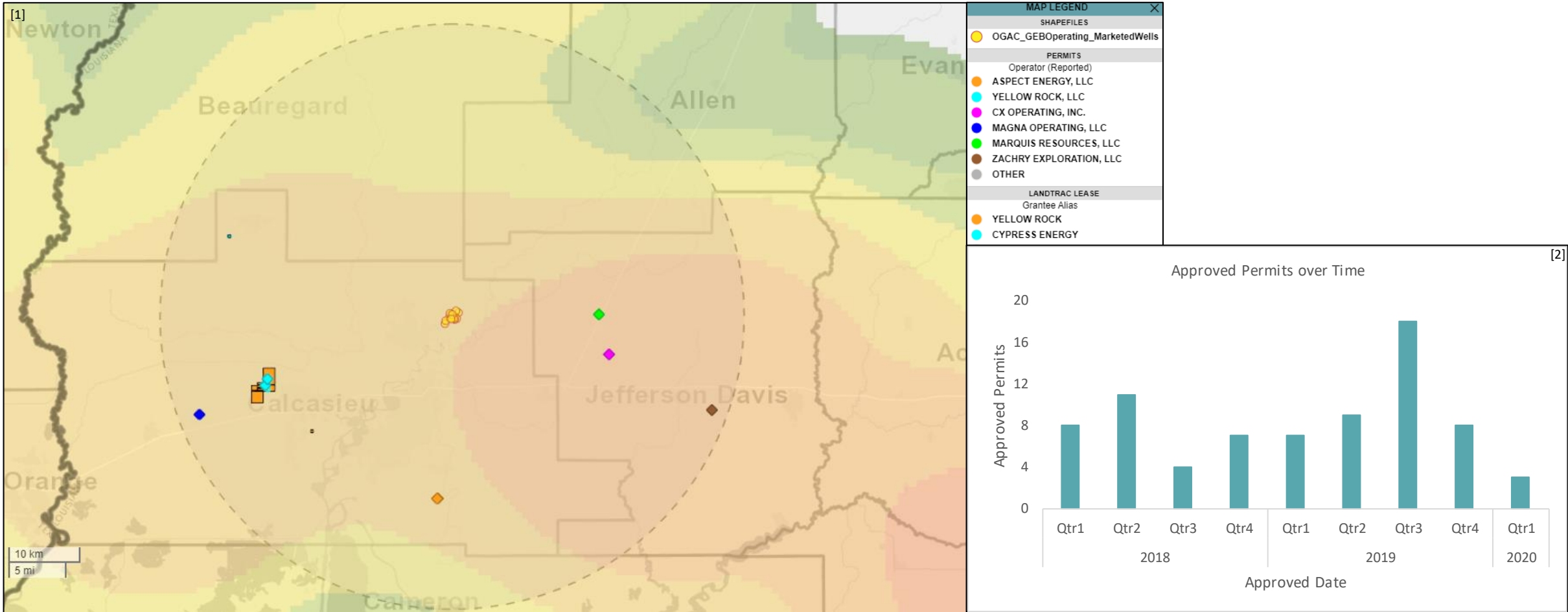
NS RB SUA; Quatre Mineral LLC 1; 26-Oct-2018
Cairn Energy Partners
STRUMA
IP24: **1.88 MMcfe/d (89% gas)**
Lateral length: **27 feet**

5200 RA SUA; Breaux ETAL 1; 30-Sep-2018
Cypress Production
5200
IP24: **0.89 MMcfe/d (99% gas)**
Lateral length: **856 feet**



Developmental Activity in the Vicinity




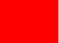
45 permits have been approved within a 25-mile radius of the marketed properties since Jan-2019



Footnotes: [1] Lease Activity heatmap for the last 6 months, Approved Permits and Landtrac leases within a 25-mile radius of the marketed assets during the last 6 months
 [2] Permits approved within a 25-mile radius of the marketed assets

Sale Process

- Electronic data room available June 10, 2020
- Bids due July 9, 2020
- Bid instructions available in EDR

June							July								
Su	M	T	W	Th	F	Sa	Su	M	T	W	Th	F	Sa		
	1	2	3	4	5	6				1	2	3	4	 EDR Open	
	7	8	9	 10	11	12	13	5	6	7	8	 9	10	11	 Bids Due
	14	15	16	17	18	19	20	12	13	14	15	16	17	18	
	21	22	23	24	25	26	27	19	20	21	22	23	24	25	
	28	29	30					26	27	28	29	30	31		

For additional questions or information, please contact our team:

Colt Standefer
Business Development
cstandefer@ogclearinghouse.com
(972) 556 - 3826

Tyler Post
Engineer
Tpost@ogclearinghouse.com
(903) 520 - 2278

Matt Stowers
Transaction Manager
Matt@ogclearinghouse.com
(832) 601-7657

Oil & Gas Asset Clearinghouse

Phone: (281) 873-4600

Email: sales@ogclearinghouse.com

GEB Energy (“Company”) is selling Operated Working Interest in Calcasieu Parish, Louisiana. Oil & Gas Asset Clearinghouse, LLC (“Clearinghouse”) is the exclusive technical, marketing, and transaction advisor for this sale. The Company and Clearinghouse make no representations or warranties, either express or implied, as to the accuracy or completeness of this information or its suitability for any purpose. The sales process contemplated herein is not exclusive. The Company and Clearinghouse reserve the right to withdraw all or any portion of the assets or change all or any terms of this sales process at any time without notice to any potential purchaser.