

OIL & GAS ASSET
CLEARINGHOUSE



**Operated Working Interest
Package**

Winkler County, Tx

COMPREHENSIVE A&D SERVICES FOR THE OIL & GAS INDUSTRY

WWW.OGCLEARINGHOUSE.COM

Executive Summary

**Bids Due
May 28, 2020**

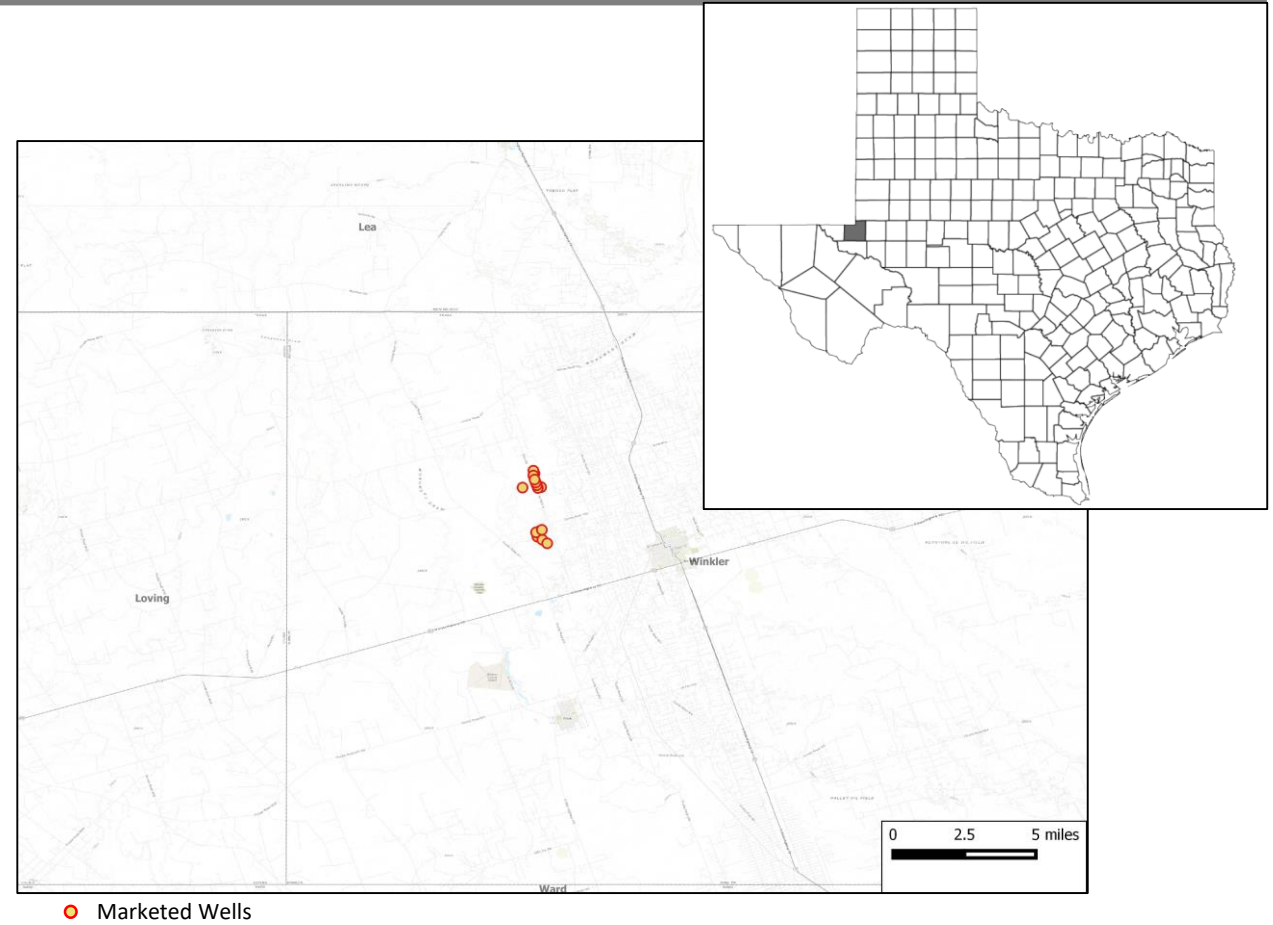
Private Sale

The Oil and Gas Asset Clearinghouse, LLC is partnering with Salt Fork Petroleum to market a package that includes operated Working Interest in 18 wells in Winkler county, Texas.

Asset Highlights

- 100% WI in 18 wells in Winkler county
- Producing from the Yates and Seven Rivers formation
- Operated by Salt Fork Operating
- 23 / 25 avg. 8/8ths production (bopd / mcf)
- \$9,029 / mo average net cash flow (2019 before workovers)

Total producing wells	10
WI / NRI / ORRI	100% / 78%
8/8ths Daily Production*	23 / 25 (bopd / mcf)
Avg. Net Cash Flow*	\$9,029 / mo



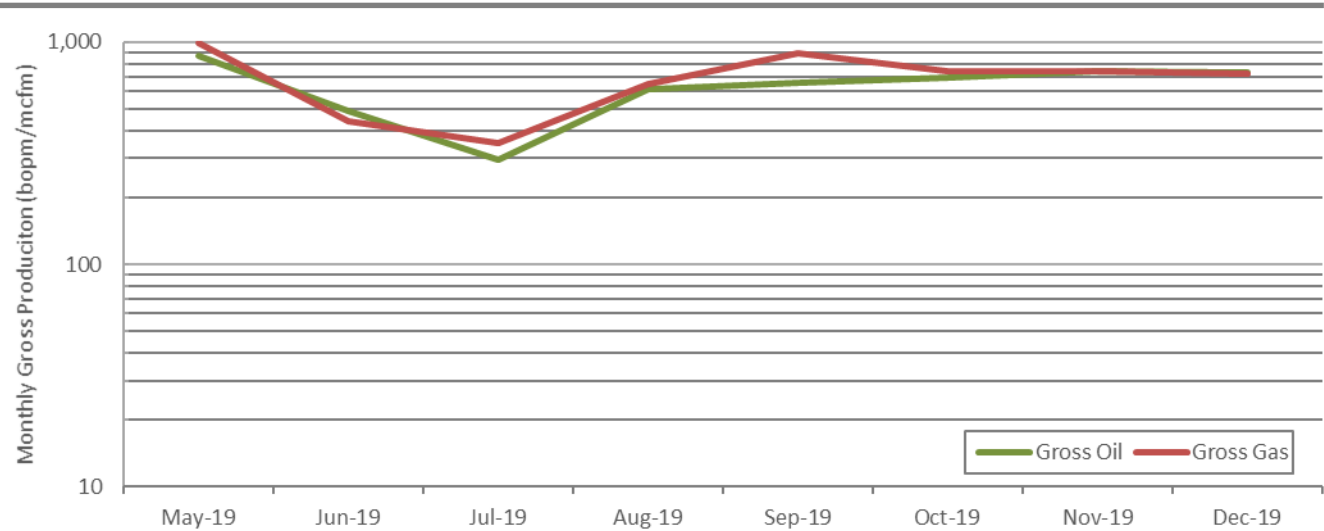
PDP & Cash Flow Summary

**Bids Due
May 28, 2020**

Private Sale

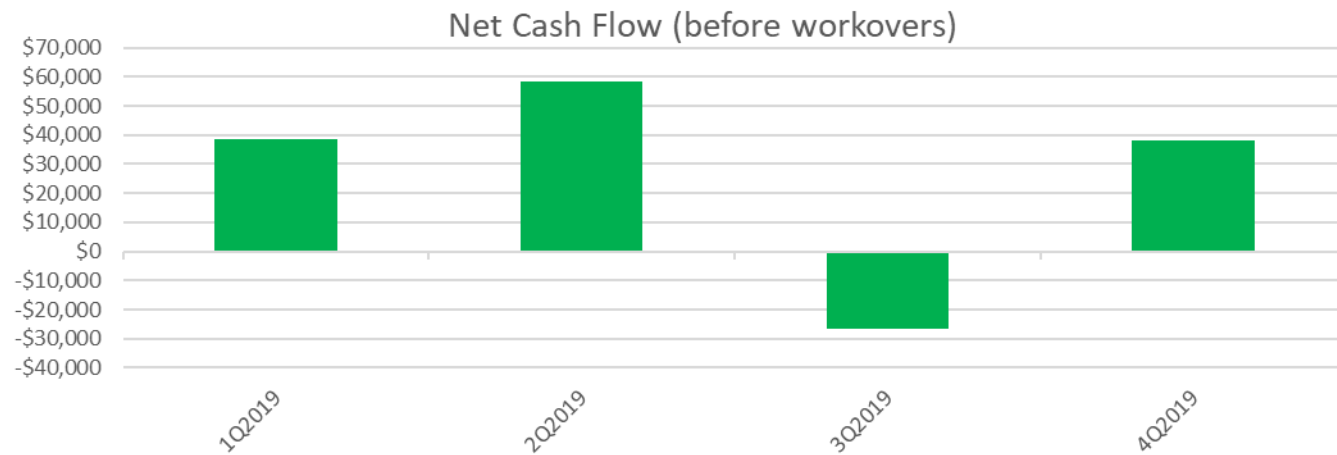
Monthly Production

- 16 oil, 2 SWD wells
- 23 / 25 avg. 8/8ths production (bopd / mcf/d)
- Producing out of the Seven Rivers and Yates formation in the Delaware Basin
- Workover opportunities available



Monthly Cash Flow

- \$9,029 / mo average net cash flow (2019 before workovers)
- \$108,350 in net cash flow in 2019 (before workovers).
- \$434,574 in CAPEX spent in 2019 to clean up field and improve facilities



Operator Presence in the Vicinity

Parsley Energy's UTL L J Beldin 1211-17 5HX well, with a lateral length of 10,336 feet, achieved an average IP24 of 3,354 BOE/d in Feb-2019

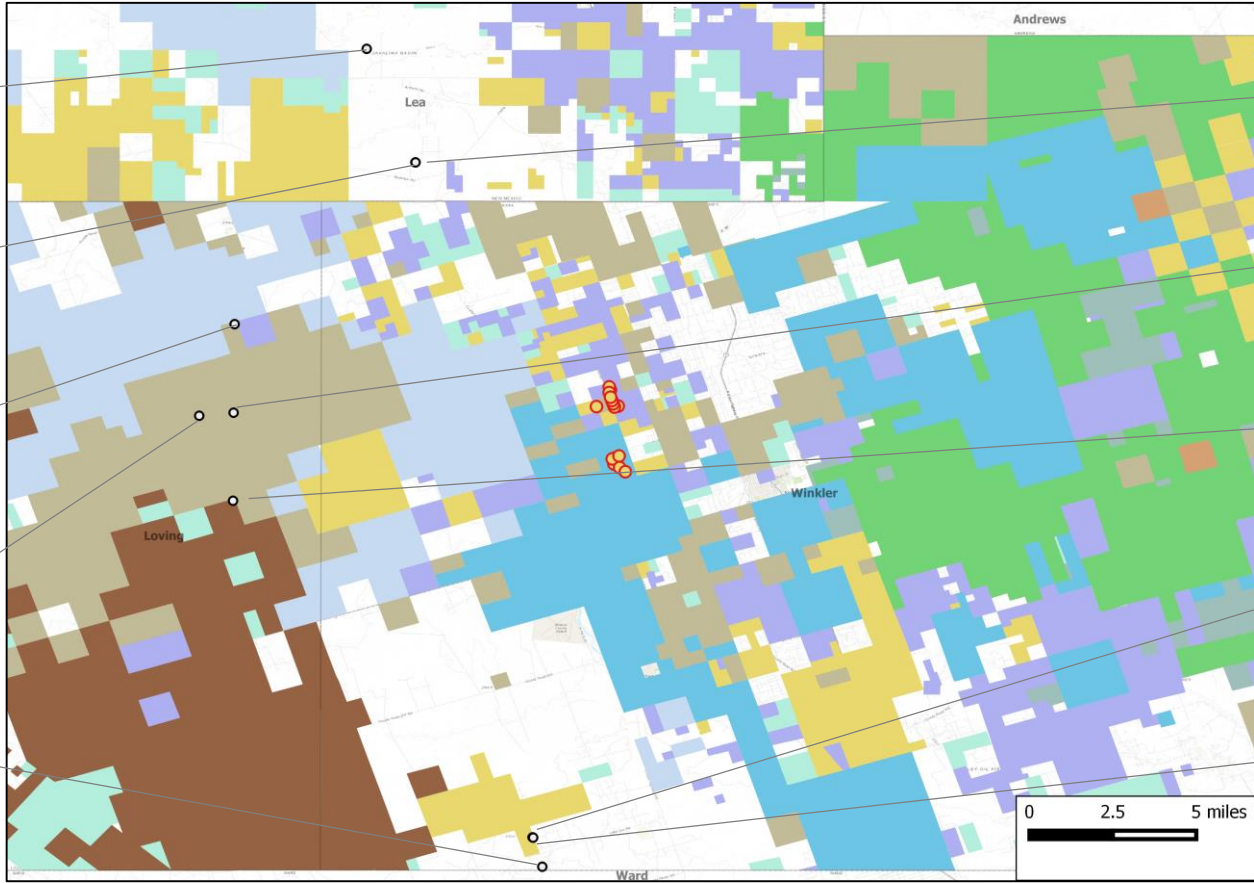
Golden Bell 26 36 06 Federal Com 115H; 12-Jun-2019
Amerdev
Wolfcamp
IP24: 2,269 BOE/d (87% oil)
Lateral length: 10,361 feet

Azalea 26 36 28 State 111H; 27-Jun-2018
Amerdev
Wolfcamp
IP24: 18.04 MMcfe/d (81% gas)
Lateral length: 6,817 feet

Ludeman D 2105H; 20-Jun-2017
Concho
Wolfcamp
IP24: 3,309 BOE/d (86% oil)
Lateral length: 4,750 feet

Hughes & Talbot 75-25 2H; 18-Oct-2017
Anadarko
Wolfcamp
IP24: 2,560 BOE/d (66% oil)
Lateral length: 4,505 feet

UTL L. J. Beldin 1211-17 5HX; 9-Feb-2019
Parsley Energy
Wolfcamp
IP24: 3,354 BOE/d (85% oil)
Lateral length: 10,336 feet



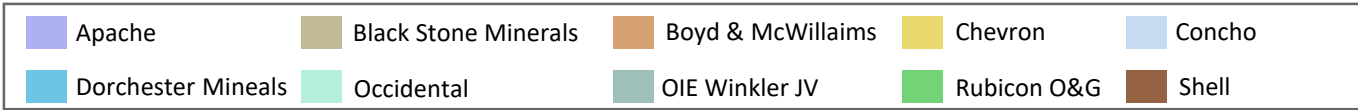
Azalea 26 36 28 State 121Y; 19-Jun-2018
Amerdev
Wolfcamp
IP24: 2,809 BOE/d (60% oil)
Lateral length: 6,798 feet

Hughes & Talbot 75-24 Unit 3H; 15-Apr-2019
Anadarko
Wolfcamp
IP24: 2,324 BOE/d (82% oil)
Lateral length: 9,882 feet

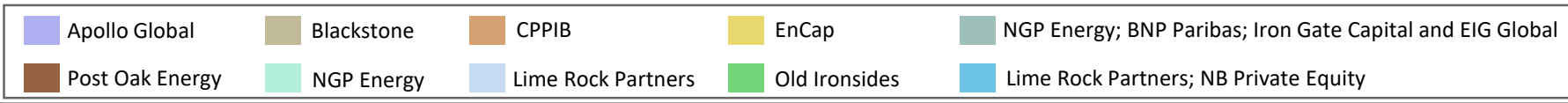
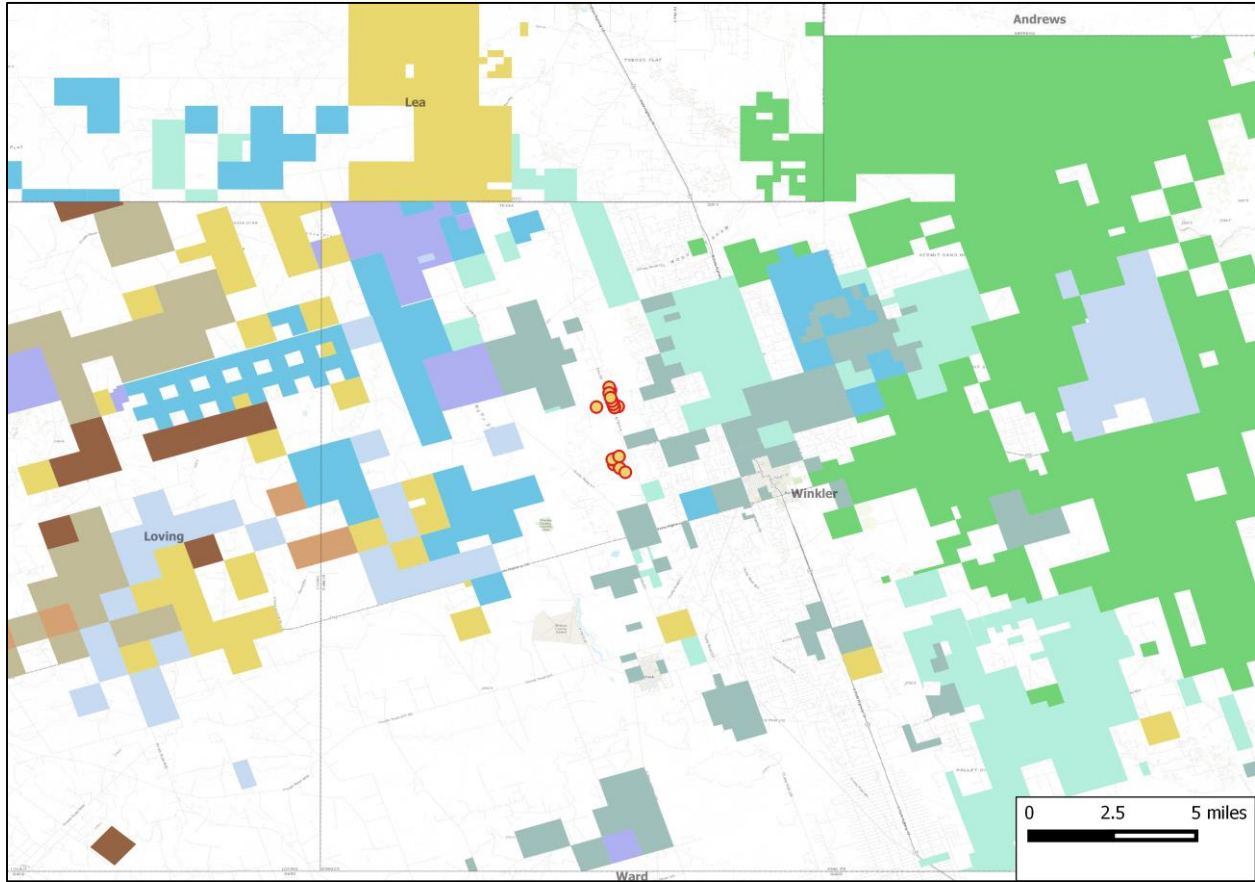
War Admiral 28-4 Unit D 1H; 1-Oct-2018
Anadarko
Wolfcamp
IP24: 2,720 BOE/d (90% oil)
Lateral length: 10,080 feet

UTL 4546B-21 51H; 24-Sep-2019
Jagged Peak Energy
Wolfcamp
IP24: 2,826 BOE/d (84% oil)
Lateral length: 10,351 feet

UTL 4546A-21 41H; 11-Nov-2019
Jagged Peak Energy
Wolfcamp
IP24: 2,408 BOE/d (84% oil)
Lateral length: 10,276 feet



Private Equity Presence in the Vicinity



LongPoint Minerals LLC
 LongPoint Minerals has been backed by Canada Pension Plan Investment Board since May-2016
 Commitment (\$): **\$831.6 million**
 Brief: 58,000 net mineral acres and 70,400 net royalty acres with 4.1 MBOE/d production in Permian and Anadarko basins.

Ameredev II LLC
 Ameredev II LLC received an initial equity commitment from EnCap Investments in Mar-2017 and subsequently received a follow-on commitment according to its presentation dated 14-Aug-2019
 Commitment (\$): **\$700 million**
 Brief: 27,352 net acres with 5.9 MBOE/d production in Lea Co., NM.

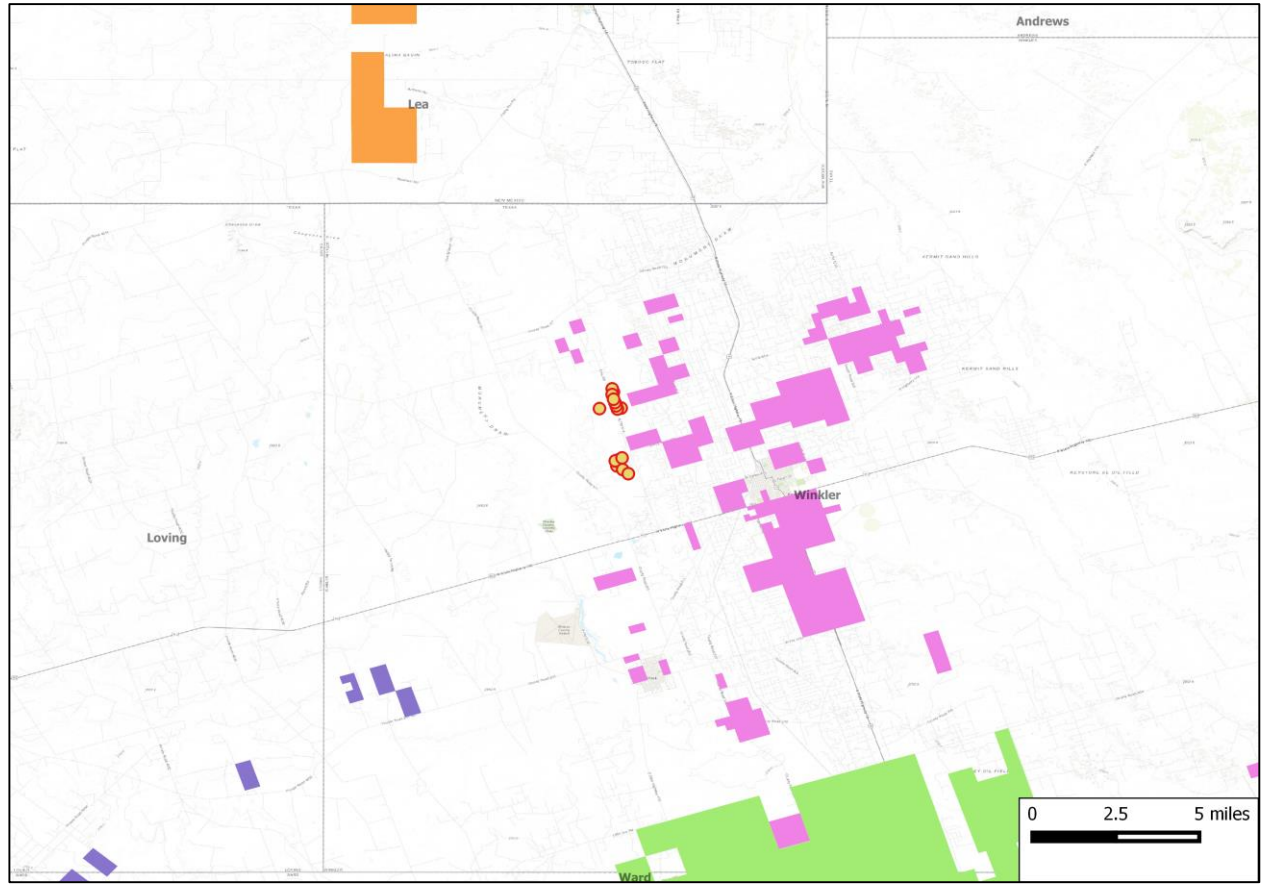
Pegasus Resources LLC
 Pegasus Resources received an equity commitment from EnCap Investments in Dec-2017. It received a follow-on commitment in Feb-2019
 Commitment (\$): **\$600 million**
 Brief: Mineral and royalty interests in Permian Delaware and Midland basins

Historical Transactions

Lilis Energy – OneEnergy Partners; Jan-18
 Deal Type: **Property**
 Deal Value: **\$70 million**
 Assets: **2,798 net acres (84% operated)**
425 BOE/d average production
150 net locations



Callon Petroleum – Cimarex Energy; May-18
 Deal Type: **Property**
 Deal Value: **\$570 million**
 Assets: **28,657 net acres (90% HBP)**
6,831 boe/d (73% oil) 1Q18 net production



Stronghold Energy II – Devon Energy; Dec-18
 Deal Type: **Property**
 Deal Value: **\$191 million**
 Assets: **39,845 net acres and 4,323 net mineral acres**
4.669 MBOE/d net production during Jul-18

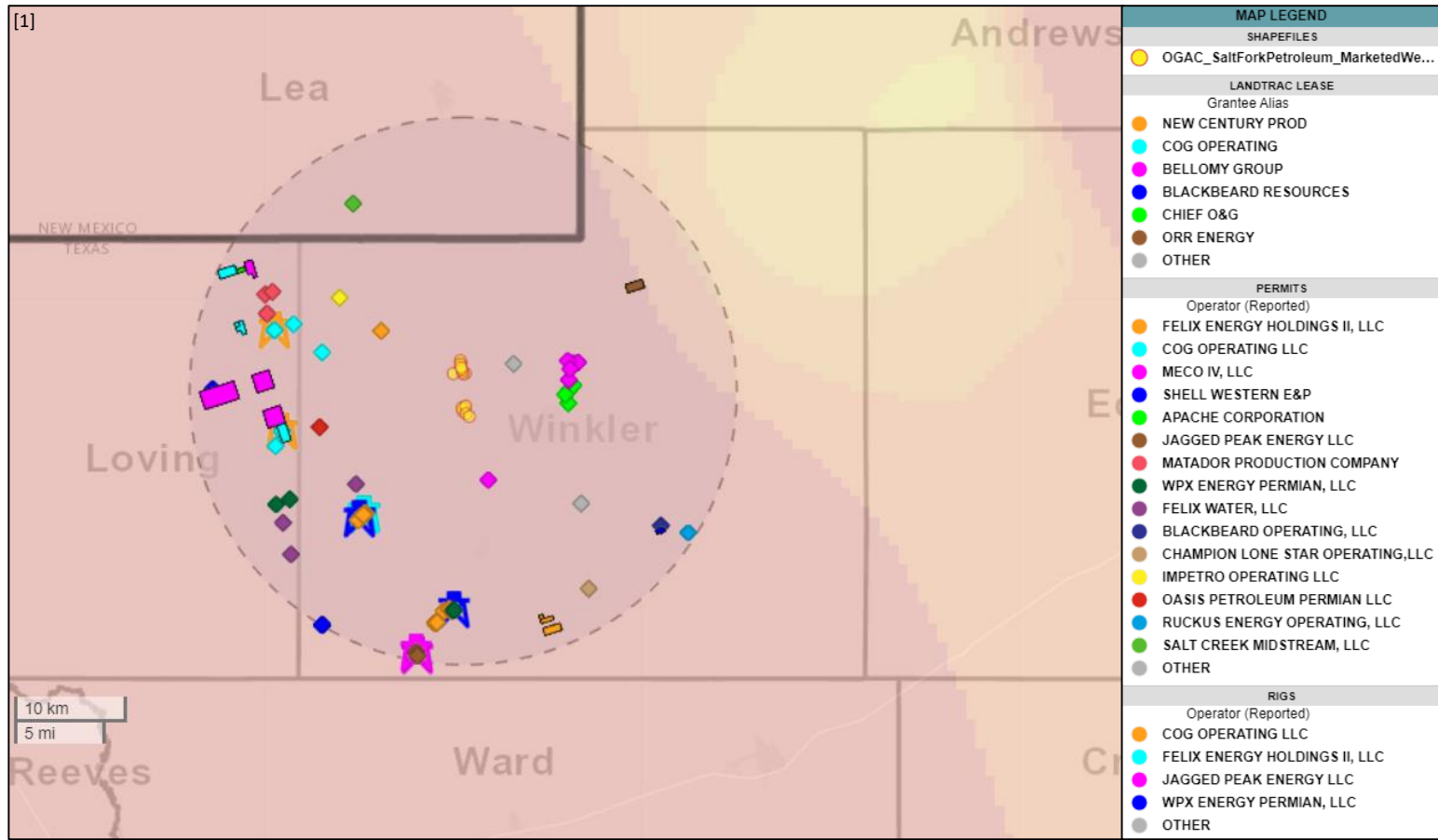


Marathon Oil – Undisclosed Seller; Sep-19
 Deal Type: **Acreage**
 Deal Value: **\$144 million**
 Assets: **60,000+ net acres**



Developmental Activity in the Vicinity

265 permits have been approved within a 15-mile radius of the marketed properties since Jan-2019



Sale Process

- Electronic data room available April 20, 2020
- Bids due May 28, 2020
- Bid instructions available in EDR

April							May						
Su	M	T	W	Th	F	Sa	Su	M	T	W	Th	F	Sa
			1	2	3	4	31					1	2
5	6	7	8	9	10	11	3	4	5	6	7	8	9
12	13	14	15	16	17	18	10	11	12	13	14	15	16
19	20	21	22	23	24	25	17	18	19	20	21	22	23
26	27	28	29	30			24	25	26	27	28	29	30

 EDR Open
 Bids Due

For additional questions or information, please contact our team:

Jeff Gostovich
Business Development
Jgostovich@ogclearinghouse.com
(832) 601 - 7655

Tyler Post
Engineer
Tpost@ogclearinghouse.com
(903) 520 - 2278

Matt Stowers
Transaction Manager
Matt@ogclearinghouse.com
(832) 601-7657

Oil & Gas Asset Clearinghouse

Phone: (281) 873-4600

Email: sales@ogclearinghouse.com

Salt Fork Petroleum (“Company”) are selling certain Working Interest assets in Winkler County, Texas. Oil & Gas Asset Clearinghouse, LLC (“Clearinghouse”) is the exclusive technical, marketing, and transaction advisor for this sale. The Company and Clearinghouse make no representations or warranties, either express or implied, as to the accuracy or completeness of this information or its suitability for any purpose. The sales process contemplated herein is not exclusive. The Company and Clearinghouse reserve the right to withdraw all or any portion of the assets or change all or any terms of this sales process at any time without notice to any potential purchaser.