



OIL & GAS ASSET
CLEARINGHOUSE

Massey ORRI

ORRI Package

Iberia & St. Landry Parishes, LA

COMPREHENSIVE A&D SERVICES FOR THE OIL & GAS INDUSTRY

WWW.OGCLEARINGHOUSE.COM

Executive Summary

**Bids Due
May 14, 2020**

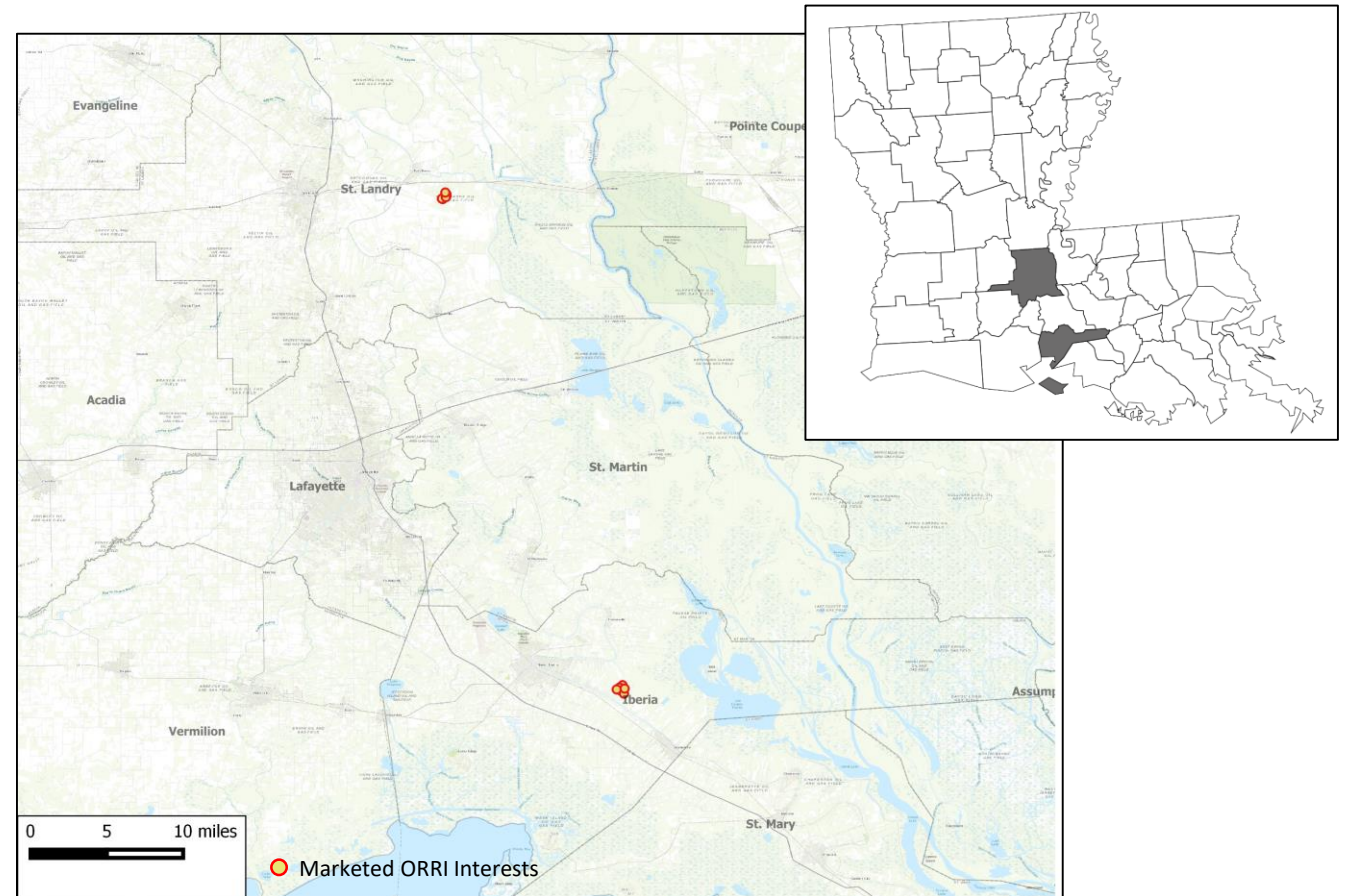
Private Sale

The Oil and Gas Asset Clearinghouse, LLC is partnering with a Randy Massey to market an Overriding Royalty Interest (ORRI) package that includes ownership in 16 wellbores in Iberia & St. Landry Parishes, LA.

Asset Highlights

- ORRI in 16 wells in Iberia & St. Landry Parishes, LA
- Producing from Miocene reservoir
- Operated by Petro Harvester
- 7,948 / 24 bopm avg. oil production (gross / net)*
- 3,289 / 7 mcfm avg. gas production (gross / net)*
- \$1,400 / mo net average cash flow (last 14 mo)

Active producing wells	14
Avg. ORRI	0.366%
Net Daily Production*	0.8 / 0.23 (bopd / mcfd)
Avg. Net Cash Flow*	\$1,400



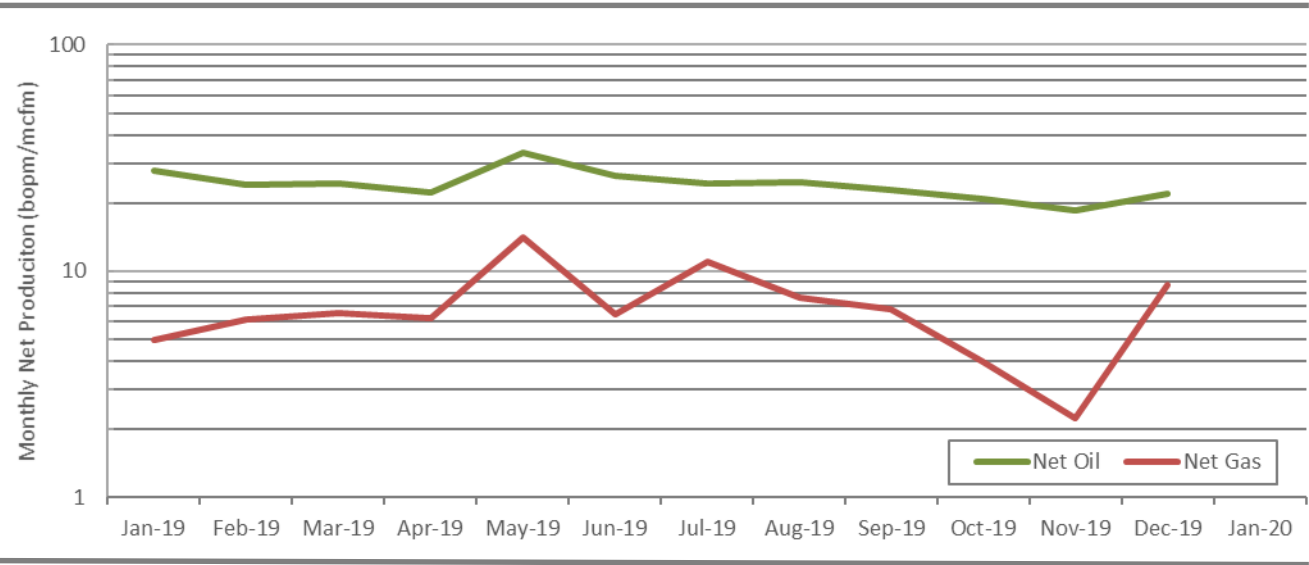
PDP & Cash Flow Summary

**Bids Due
May 14, 2020**

Private Sale

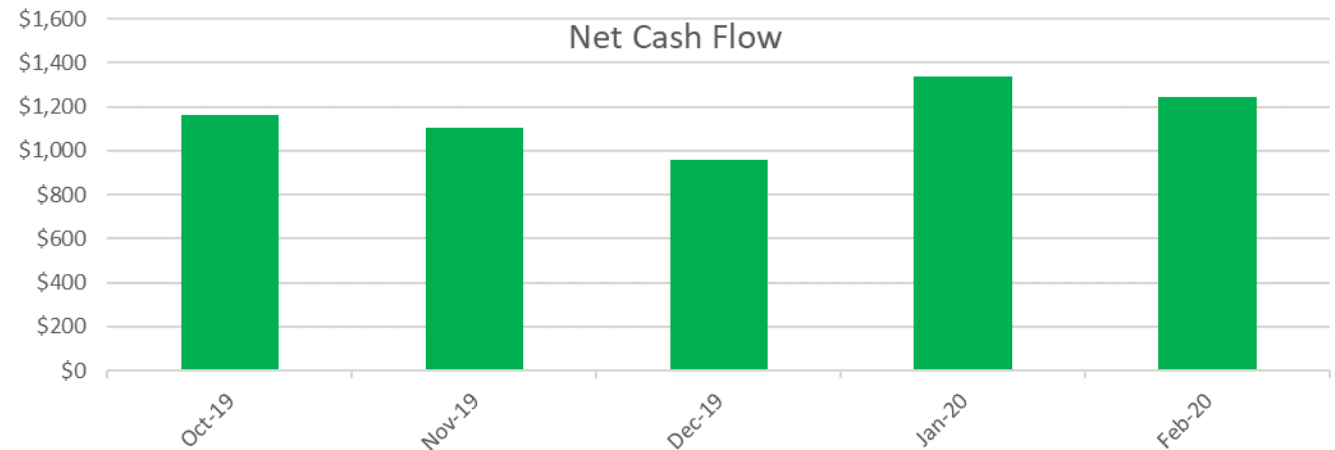
Monthly Production

- 16 wellbores, 14 active producing wells
- 7,948 / 3,289 avg. monthly production (bopm / mcfm)
- Operated by Petro Harvester
- Producing from Miocene reservoir



Monthly Cash Flow

- \$1,400 / mo net average cash flow (last 14 mo)
- \$19,647 in cumulative net cash flow (last 14 mo)



Operator Presence in the Vicinity

Interstate Exploration's Marg V CIB H RA SUA well achieved an average IP24 of 1.29 MMcfe/d in Dec-2018

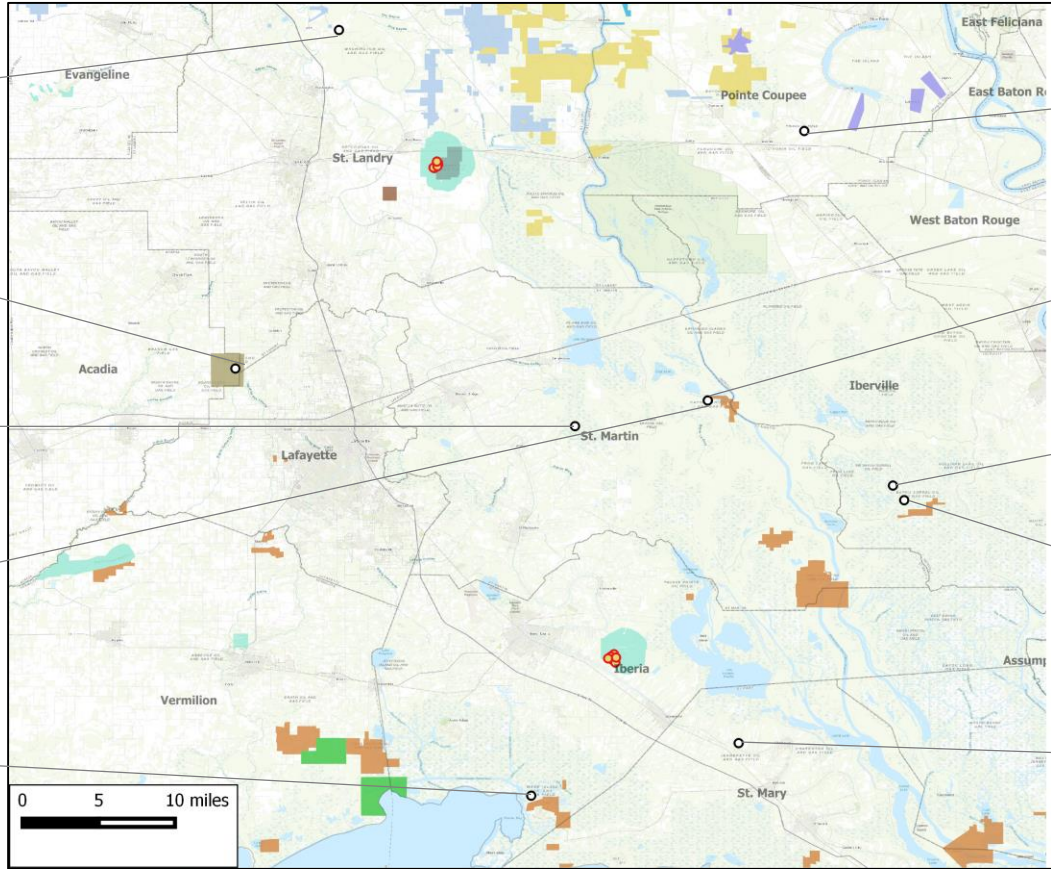
THISCO PARTNERSHIP 7; 2-Apr-2019
Key Operating Company
IP24: 62 BOE/d (89% oil)
Lateral length: 303 feet

MARG 1-F6 RA SUA; GRIFFITH 1; 25-Sep-2019
Camex Operating Company
Marg 1-F6
IP24: 165 BOE/d (79% oil)
Lateral length: 1,509 feet

VUA; ST MARTIN LAND CO A 1; 17-Feb-2018
Mack Energy Co.
Marg Tex
IP24: 60 BOE/d (100% oil)
Lateral length: 356 feet

4300 RB SUA; SUGARBERRY O&G CORP 010-ALT;
30-Jan-2019
Bayou Bouillon Operating Llc
IP24: 162 BOE/d (94% oil)
Lateral length: 1,140 feet

WEEKS ISLAND ST UA 028-D; 1-Oct-2019
Texas Petroleum Investment Company
IP24: 1.10 MMcfe/d (99% gas)
Lateral length: 104 feet



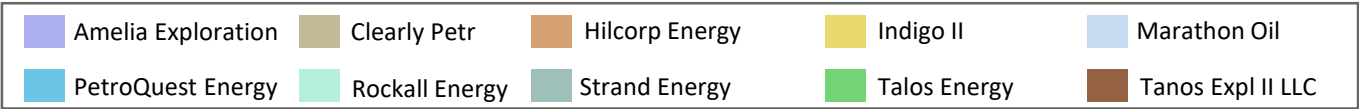
FRS U WX RA SU; L & B ETAL TR19 1; 14-Apr-2018
Will-Drill Production Co. Inc.
Frs U Wx
IP24: 86 BOE/d (99% oil)
Lateral length: 1,603 feet

4300 RB SUA; SUGARBERRY O&G CORP 012-ALT;
30-Jan-2019
Bayou Bouillon Operating Llc
IP24: 161 BOE/d (76% oil)
Lateral length: 715 feet

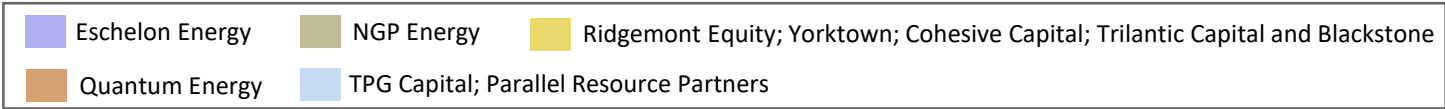
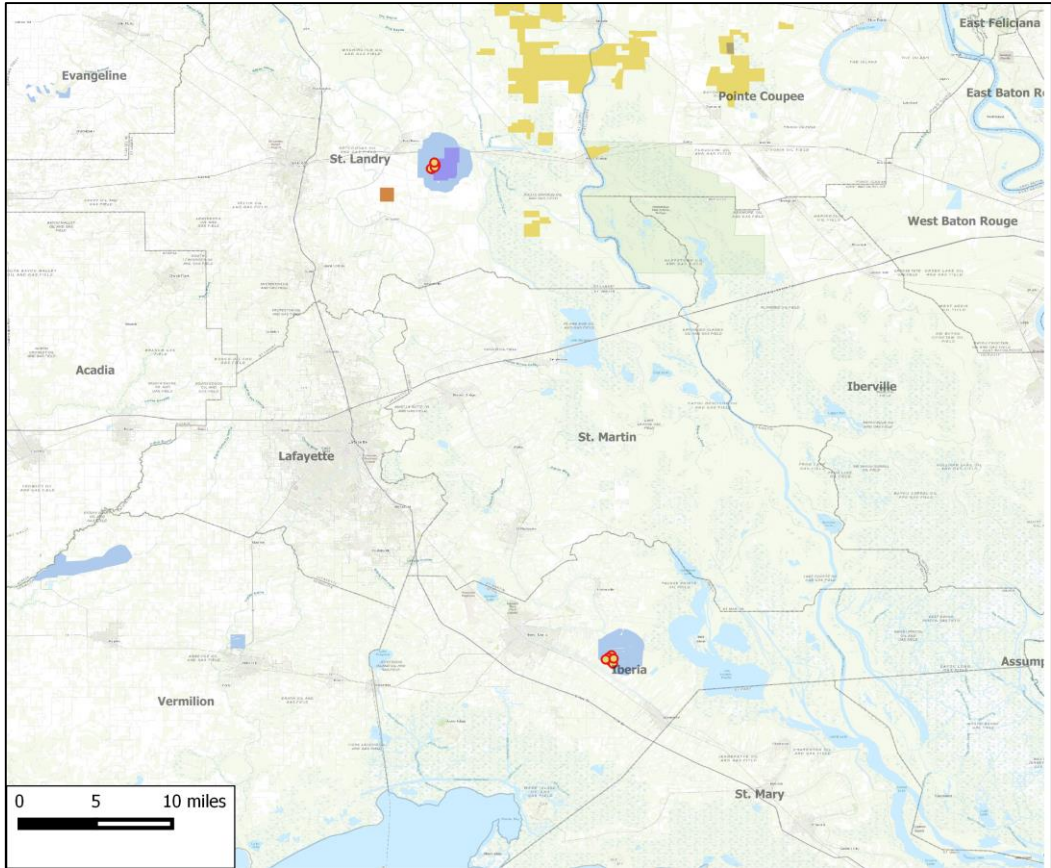
MARG V CIB H RA SUA; ABLD 1; 14-Dec-2018
Interstate Explorations Llc
Marg V Cib H
IP24: 1.29 MMcfe/d (78% gas)

E2-L4 RA SUA; FIVE STAR ROY PTR 1; 14-Dec-2018
Interstate Explorations Llc
IP24: 0.97 MMcfe/d (83% gas)

P-W RA SUA; BANTA 1; 2-Feb-2018
Gulf Exploration Company, Inc.
IP24: 0.43 MMcfe/d (85% gas)
Lateral length: 471 feet



Private Equity Presence in the Vicinity



Indigo Natural Resources LLC
Indigo Natural is financially backed by Ridgemont Equity Partners, Yorktown Energy Partners LLC, Cohesive Capital Partners, Trilantic Capital Partners and Blackstone Group.
Commitment (\$): **Undisclosed**
Brief: Ark-La-Tex focused company



Rockall Energy LLC
Rockall Energy received an equity commitment from TPG Capital and Parallel Resource
Commitment (\$): **Undisclosed**
Brief: Assets in Gulf Coast, Midcontinent, Rockies and Ark-La-Tex.

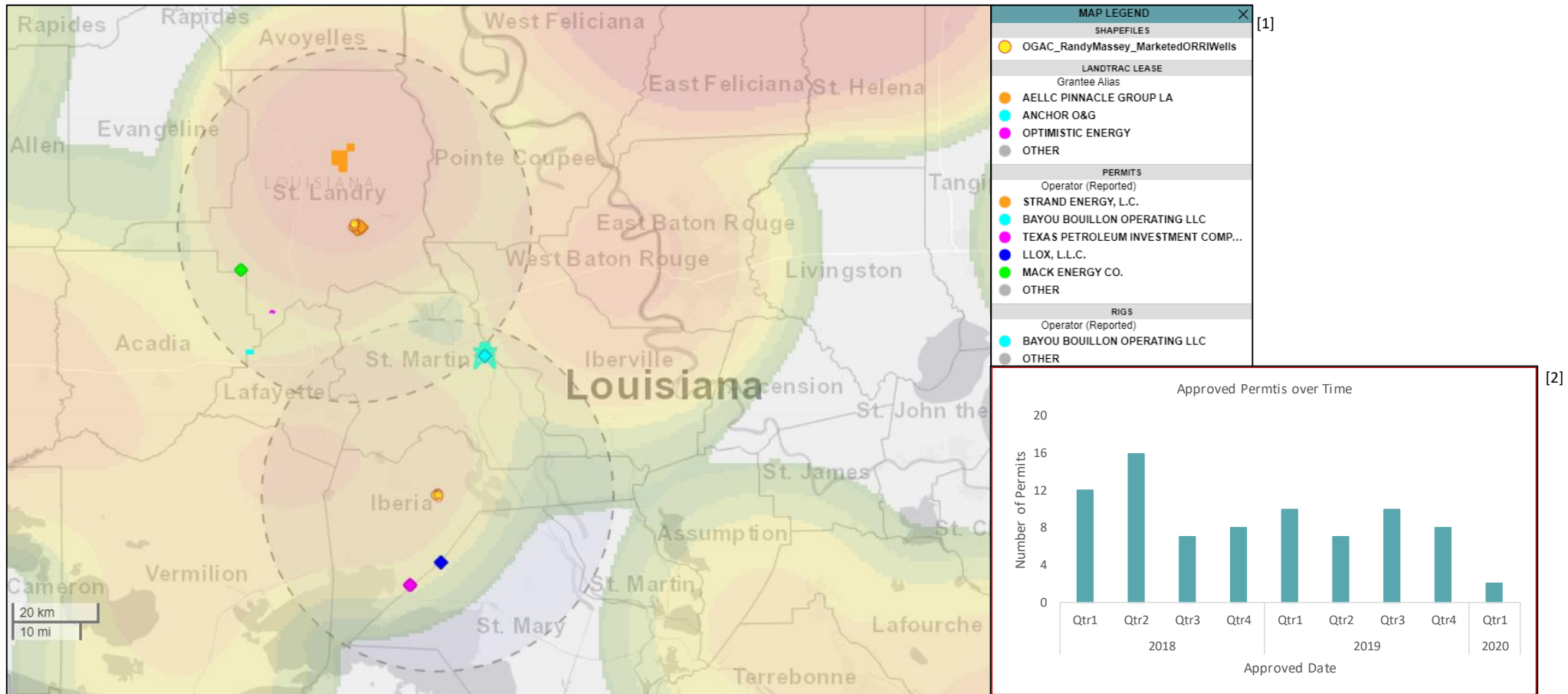


Strand Energy LC
Strand Energy is backed by Eschelon Energy Partners since Jan-2008
Commitment (\$): **Undisclosed**
Brief: Assets in Texas, Louisiana, and Arkansas.



Developmental Activity in the Vicinity

37 drilling permits have been approved within a 25-mile radius of the marketed assets since Jan-2019



Sale Process

- Electronic data room available April 2, 2020
- Bids due May 14, 2020
- Bid instructions available in EDR

April							May						
Su	M	T	W	Th	F	Sa	Su	M	T	W	Th	F	Sa
			1	2	3	4						1	2
5	6	7	8	9	10	11	3	4	5	6	7	8	9
12	13	14	15	16	17	18	10	11	12	13	14	15	16
19	20	21	22	23	24	25	17	18	19	20	21	22	23
26	27	28	29	30			24	25	26	27	28	29	30

 EDR Open
 Bids Due

For additional questions or information, please contact our team:

Jeremy Beddo
Business Development
JBeddo@ogclearinghouse.com
(405) 613 - 1227

Tyler Post
Engineer
TPost@ogclearinghouse.com
(903) 520 - 2278

Matt Stowers
Business Development
Matt@ogclearinghouse.com
(832) 601-7657

Oil & Gas Asset Clearinghouse

Phone: (281) 873-4600

Email: sales@ogclearinghouse.com

Randy Massey (“Company”) is selling certain type of asset in Iberia & St. Landry Parishes, LA. Oil & Gas Asset Clearinghouse, LLC (“Clearinghouse”) is the exclusive technical, marketing, and transaction advisor for this sale. The Company and Clearinghouse make no representations or warranties, either express or implied, as to the accuracy or completeness of this information or its suitability for any purpose. The sales process contemplated herein is not exclusive. The Company and Clearinghouse reserve the right to withdraw all or any portion of the assets or change all or any terms of this sales process at any time without notice to any potential purchaser.