



OIL & GAS ASSET  
**CLEARINGHOUSE**



**THREE CROWN PETROLEUM LLC**

**North Park Basin Leasehold  
Package**

**Jackson County, CO**

**COMPREHENSIVE A&D SERVICES FOR THE OIL & GAS INDUSTRY**

**[WWW.OGCLEARINGHOUSE.COM](http://WWW.OGCLEARINGHOUSE.COM)**

# Executive Summary

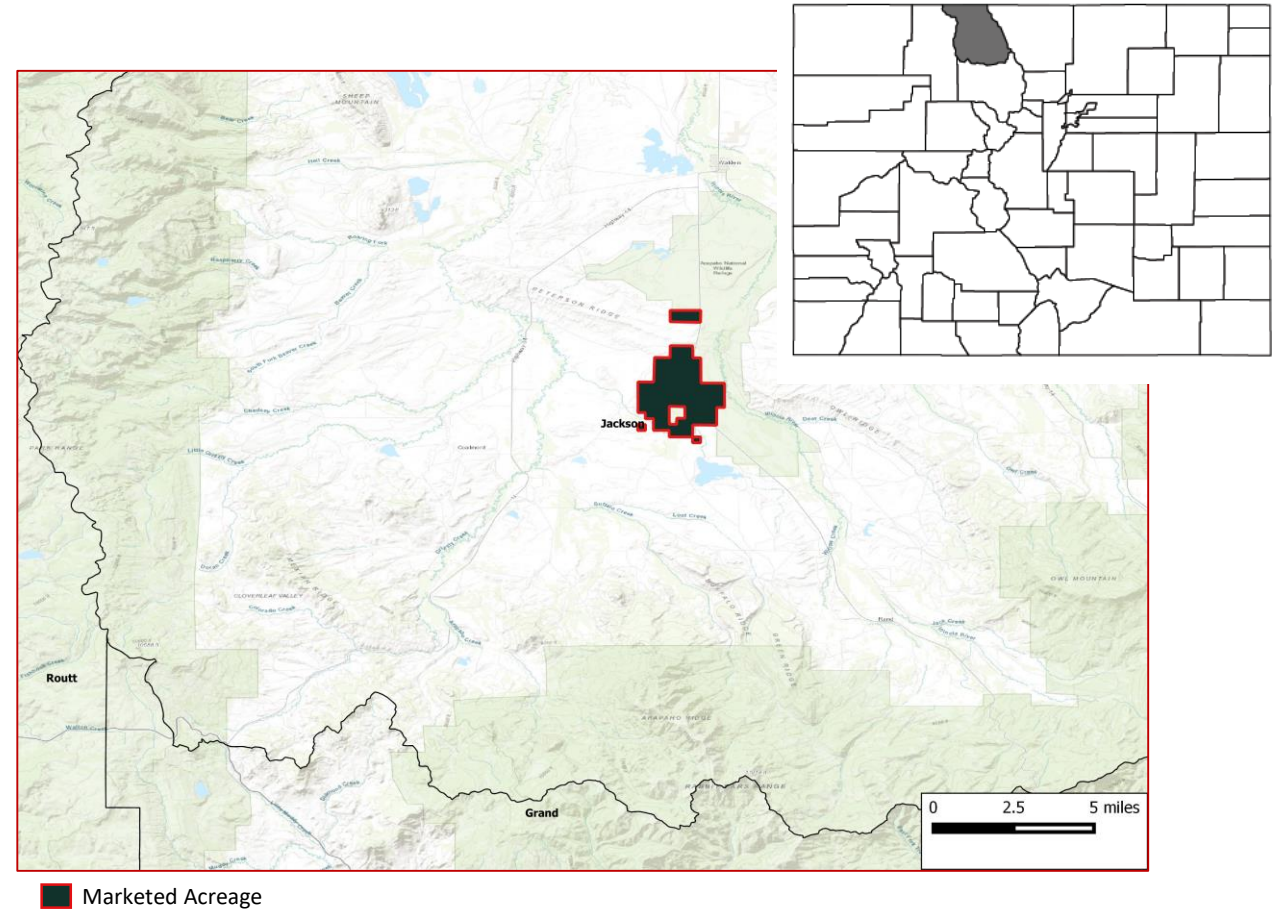
**Bids Due**  
**February 27, 2020**

**Private Sale**

The Oil and Gas Asset Clearinghouse, LLC is partnering with Three Crown Petroleum to market a leasehold package that includes 4,444.47 / 4,285.42 acres (gross / net) located in Jackson County, OK.

## Asset Highlights

- 4,444.47 / 4,285.42 acres (gross / net)
- Offset IP's in Niobrara 1,800 BOE/d
- 16 wells per section equivalent pattern
- Multiple stacked payzones in Niobrara, Sussex, Shannon, and Frontier
- Offset operator SandRidge has received 27 approved permits in last 12 months
- >50% IRR on 10,000' Niobrara offset type curves at flat \$60/2.5 (oil / gas) price decks



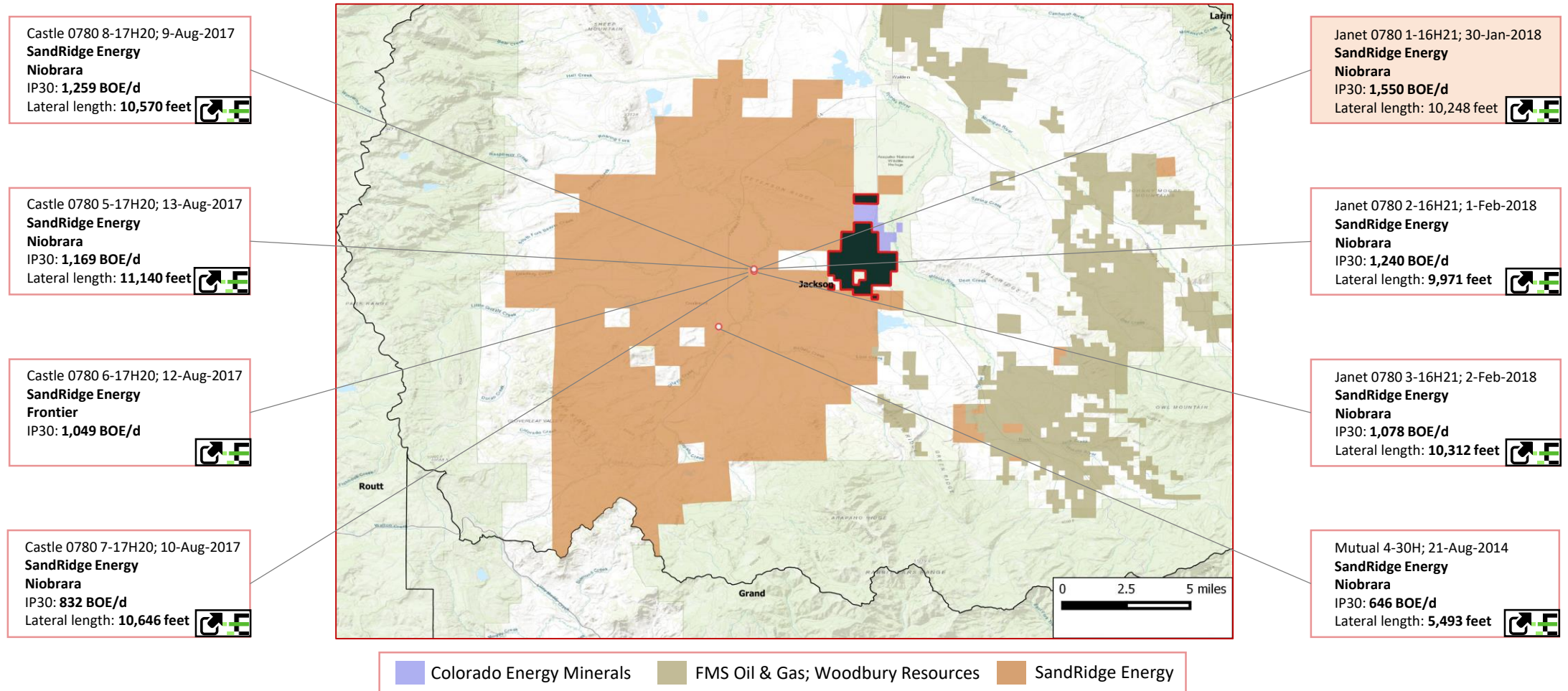
# Three Crown Petroleum

**Bids Due**  
**February 27, 2020**

**Private Sale**

## Operator Presence in the Vicinity

SandRidge Energy has spud multiple wells with an average IP30 of 1,000+ BOE/d roughly 5 miles west of the marketed acreage





# Three Crown Petroleum

**Bids Due**  
**February 27, 2020**

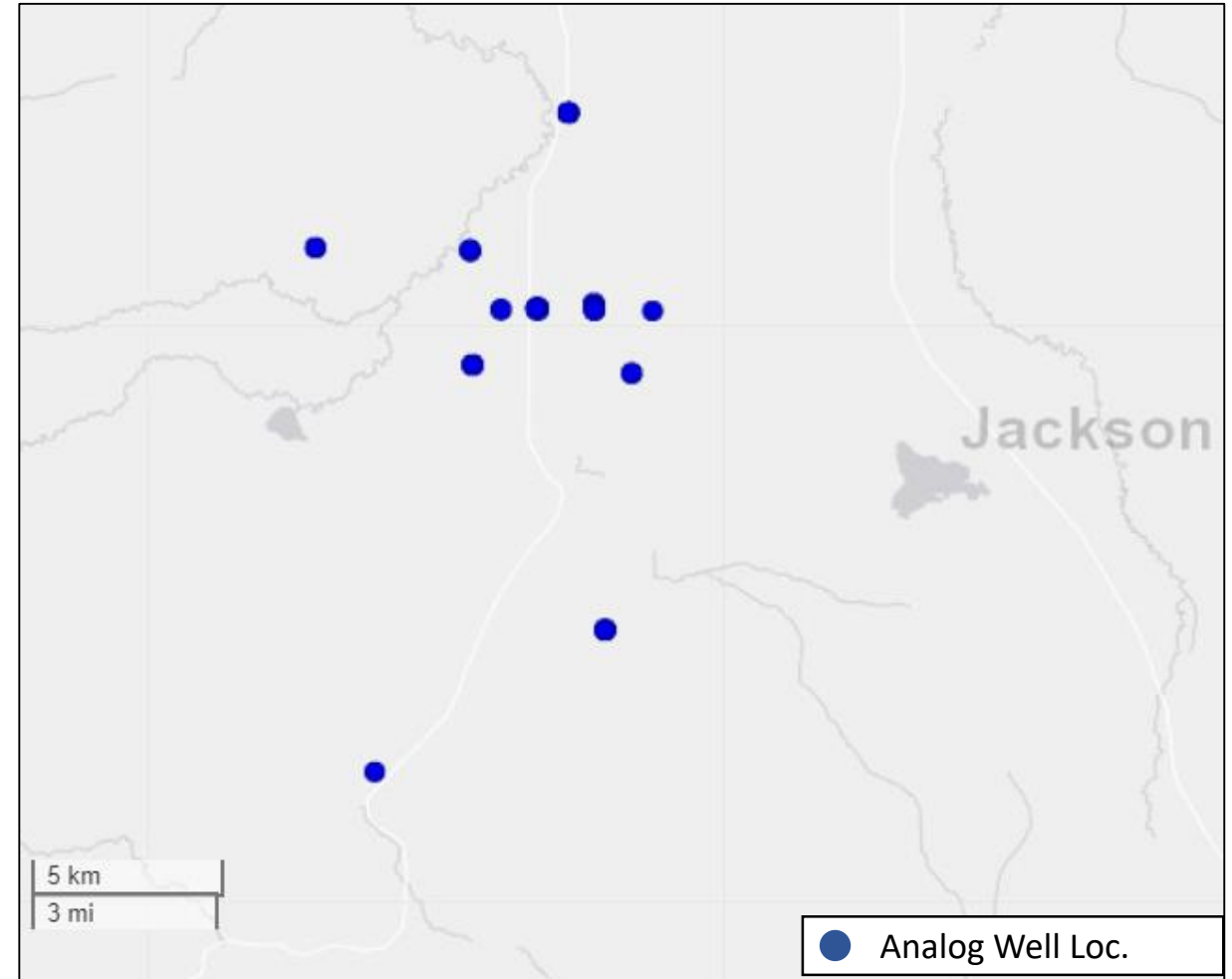
**Private Sale**

## Niobrara Type Curve

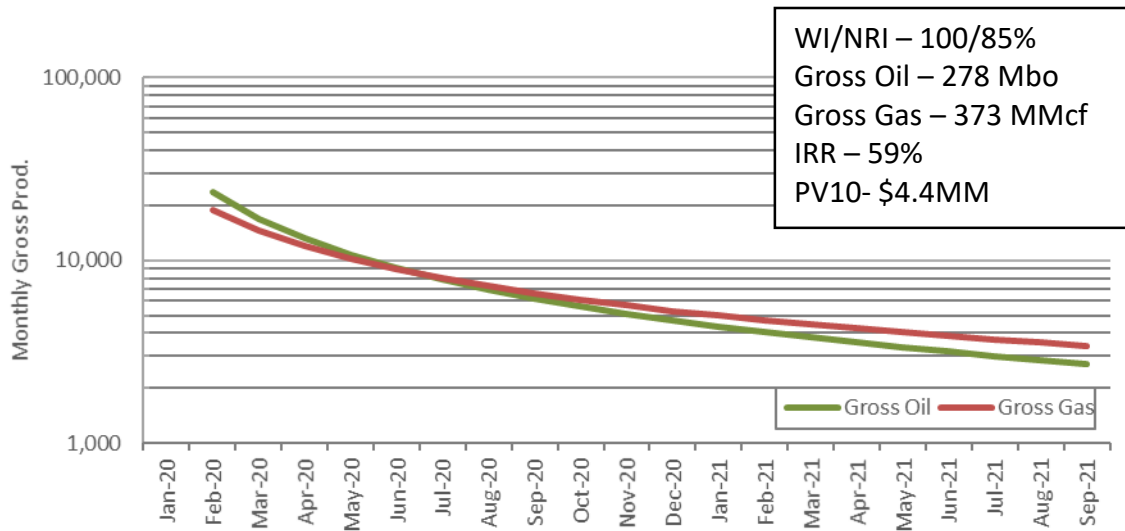
Niobrara Single Well Economics

- 40 offset horizontal Niobrara wells drilled within 20-mile radius drilled since Jan. 2015
- 48 potential laterals on acreage
- 880 avg. boe/d gross IP (88% oil)
- \$4.4MM PV10 for the operators 100% WI per well

## Analog Locations Map



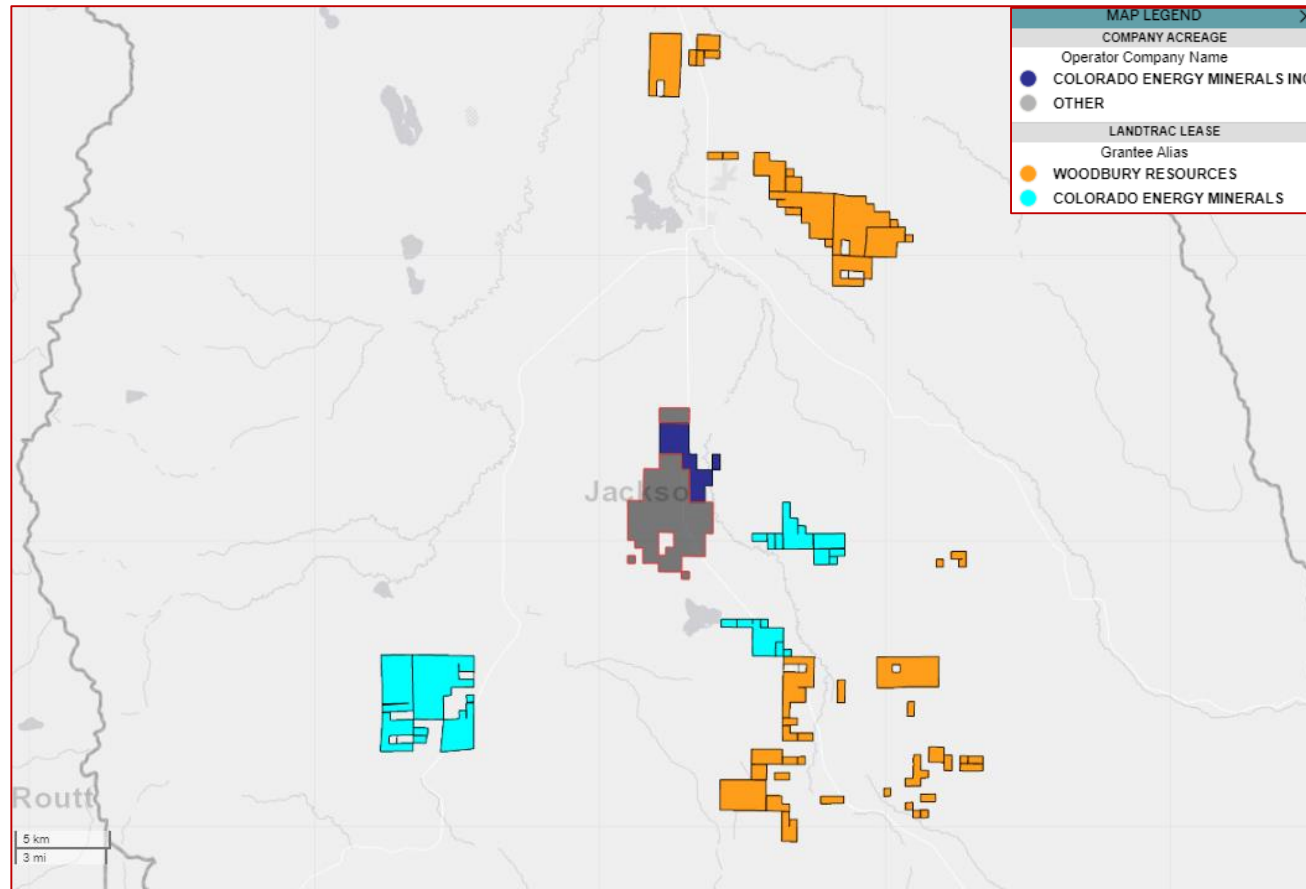
## 10,000' Normalized Type Curve



## Capital Activity

Woodbury Resources and Colorado Energy Minerals have been involved in significant leasing efforts in the vicinity of the marketed acreage

### Leasing activity during the last 6 months



#### Woodbury Resources

Woodbury Resources holds a significant position in the vicinity of the marketed acreage in a JV with FMS Oil and Gas. The companies had previously planned to sell its North Park basin acreage during Aug-2018. However, this plan was pulled based on Enverus field intelligence. Woodbury has since acquired significant leasehold acreage near the marketed property.

#### Colorado Energy Minerals

Colorado Energy Minerals holds acreage contiguous to the marketed property. The company has also been involved in significant leasing efforts in the vicinity during the last 6 months.

■ Marketed Acreage ■ Colorado Energy Minerals existing acreage

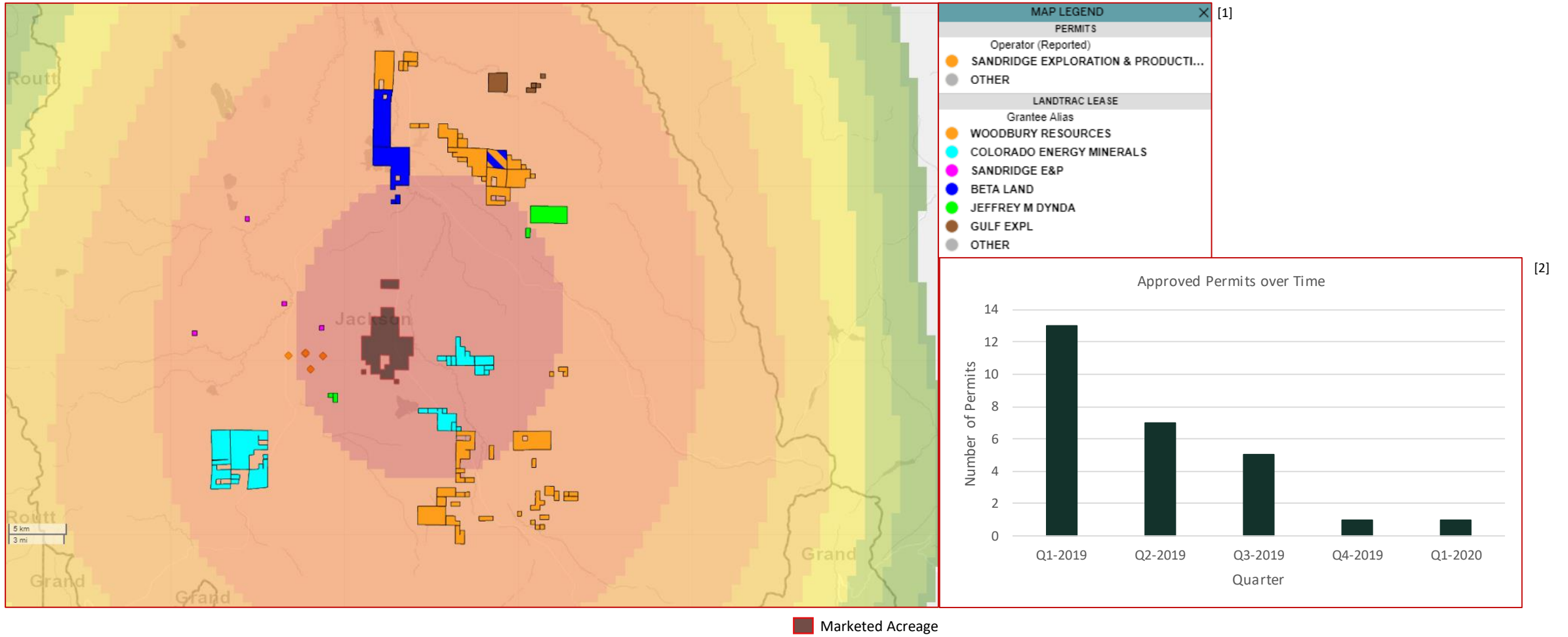
# Three Crown Petroleum

**Bids Due  
February 27, 2020**

**Private Sale**

## Developmental Activity in the Vicinity

Marketed acreage is in a concentrated leasing location. SandRidge Energy has 27 approved permits since Jan-2019



---

## Sale Process

---

- Electronic data room available February 5, 2020
- Bids due February 27, 2020
- Bid instructions available in EDR

| January |    |    |    |    |    |    | February |    |    |    |    |    |    |
|---------|----|----|----|----|----|----|----------|----|----|----|----|----|----|
| Su      | M  | T  | W  | Th | F  | Sa | Su       | M  | T  | W  | Th | F  | Sa |
|         |    |    | 1  | 2  | 3  | 4  |          |    |    |    |    |    | 1  |
| 5       | 6  | 7  | 8  | 9  | 10 | 11 | 2        | 3  | 4  | 5  | 6  | 7  | 8  |
| 12      | 13 | 14 | 15 | 16 | 17 | 18 | 9        | 10 | 11 | 12 | 13 | 14 | 15 |
| 19      | 20 | 21 | 22 | 23 | 24 | 25 | 16       | 17 | 18 | 19 | 20 | 21 | 22 |
| 26      | 27 | 28 | 29 | 30 | 31 |    | 23       | 24 | 25 | 26 | 27 | 28 | 29 |

 EDR Open  
 Bids Due

For additional questions or information, please contact our team:

Jeremy Beddo  
Business Development  
[JBeddo@ogclearinghouse.com](mailto:JBeddo@ogclearinghouse.com)  
(405) 613-1227

Tyler Post  
Engineer  
[TPost@ogclearinghouse.com](mailto:TPost@ogclearinghouse.com)  
(903) 520 - 2278

## Oil & Gas Asset Clearinghouse

Phone: (281) 873-4600

Email: [sales@ogclearinghouse.com](mailto:sales@ogclearinghouse.com)

Three Crown Petroleum (“Company”) is selling certain leasehold located in Jackson County, CO. Oil & Gas Asset Clearinghouse, LLC (“Clearinghouse”) is the exclusive technical, marketing, and transaction advisor for this sale. The Company and Clearinghouse make no representations or warranties, either express or implied, as to the accuracy or completeness of this information or its suitability for any purpose. The sales process contemplated herein is not exclusive. The Company and Clearinghouse reserve the right to withdraw all or any portion of the assets or change all or any terms of this sales process at any time without notice to any potential purchaser.