



OIL & GAS ASSET  
**CLEARINGHOUSE**



**Charter Oak Production Co., LLC**  
Oil & Gas Exploration and Production

**Operated PDP with Leasehold Development**  
**Love County, Oklahoma**

**COMPREHENSIVE A&D SERVICES FOR THE OIL & GAS INDUSTRY**

[WWW.OGCLEARINGHOUSE.COM](http://WWW.OGCLEARINGHOUSE.COM)

# Executive Summary

Love County, Oklahoma

**Bids Due  
December 3, 2019**

**Private Sale**

The Oil and Gas Asset Clearinghouse, LLC is partnering with Charter Oak Production Co. LLC., to market a package that includes 1,017.5118 acres of leasehold, 1848 acres HBP, along with an average 93% Working Interest (69% NRI), in four (4) PDP wells located in Love County, Oklahoma.

## Summary

- Blanket acreage with drilling potential
- Producing formations:

**AMC Matador:** Caney, Sycamore, Woodford, Viola

**Boss Hogg:** Springer, Sycamore, Woodford, Viola, Simpson  
(Arbuckle plugged off)

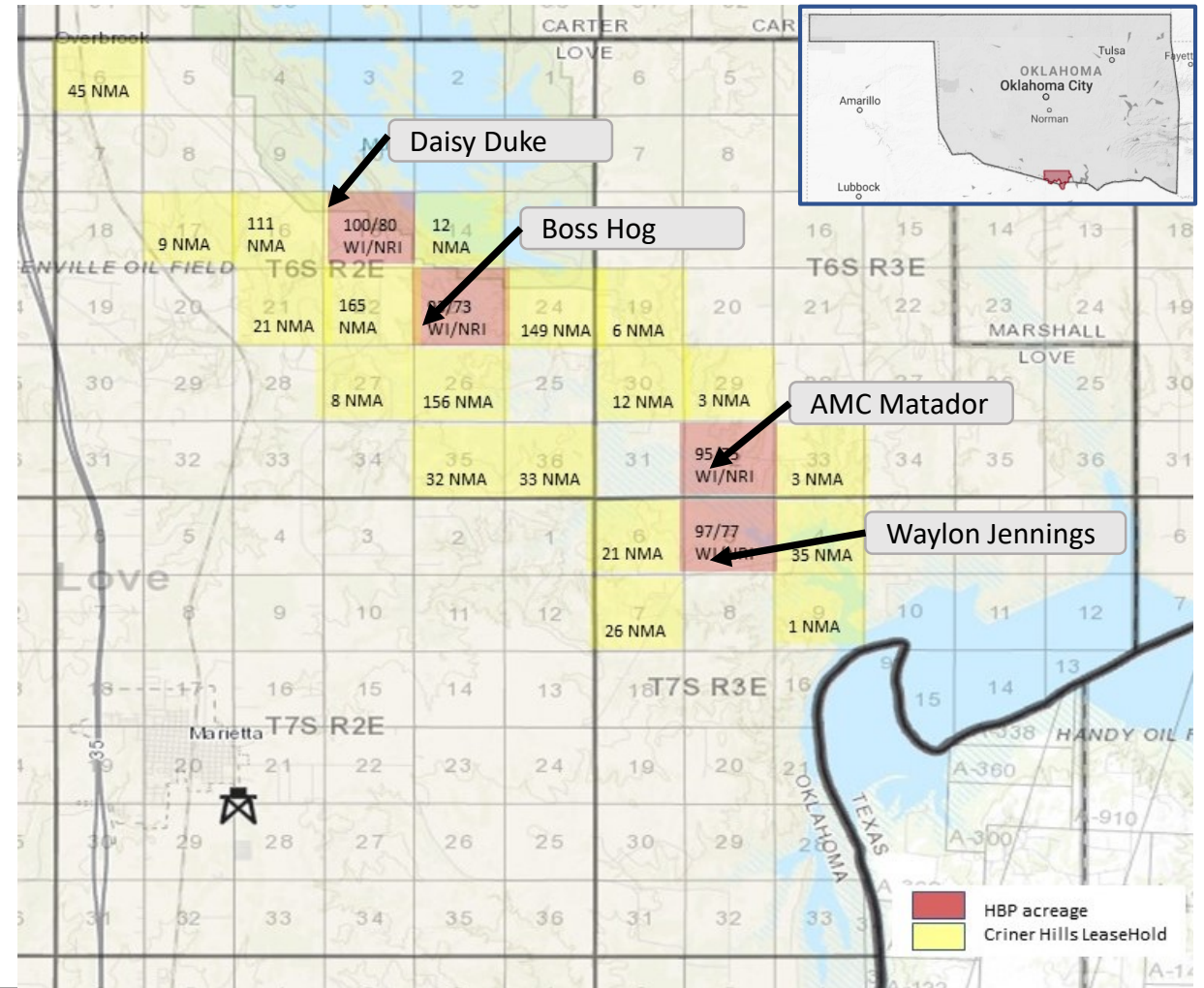
**Daisy Duke:** Sycamore, Woodford, Viola (Simpson plugged off)

**Waylon Jennings:** Viola

- Upside in converting wells to ESP and adding SWD disposal capacity
- Additional upside potential in adding payzones in Viola, Arbuckle, Caney, & Woodford
- Attractive pooling activity by XTO <5 miles away (\$1,350/acre)
- Heavy leasing activity (24 in last 90 days) in 7-mile radius

## Asset Highlights

Producing wells	4
Working Interest	93-100%
Current Net Production	60 Boepd
Total Acreage	2,835 net acres 1,848 (HBP) 1,017 (leasehold)



# Workover Opportunities

Love County, Oklahoma

## Overview

A L Tucker #1 [1]– Convert to disposal well

- Currently abandoned with casing in hole
- \$200k AFE to support surrounding upgrades to ESP

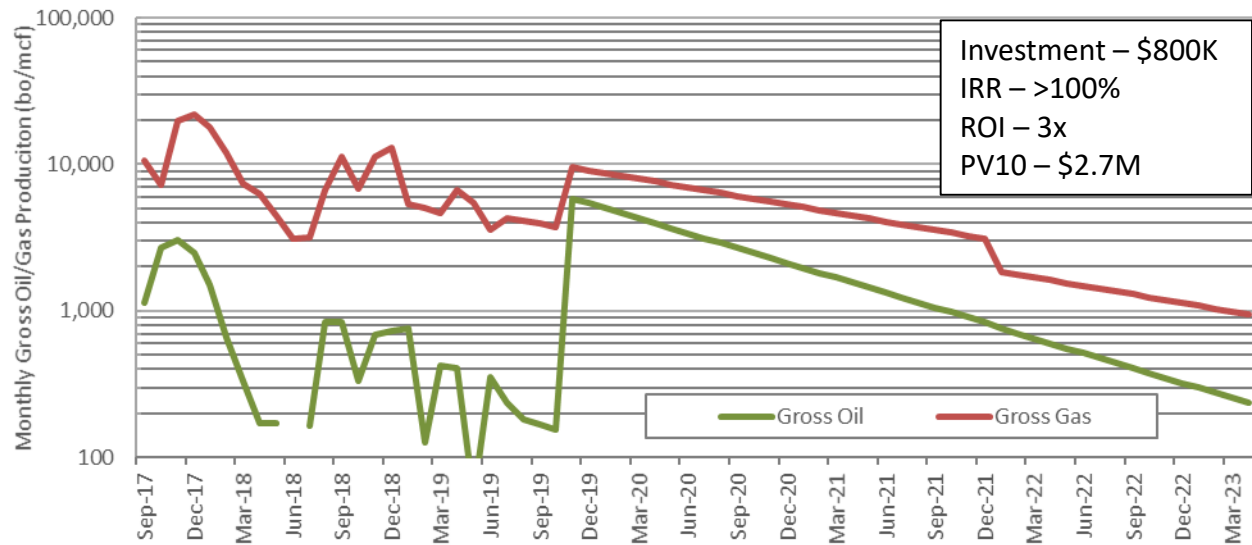
AMC Matador 1-32 [2] – Upgrade to ESP

- \$100k AFE potential increase production 40-50 bopd & 200 mcf

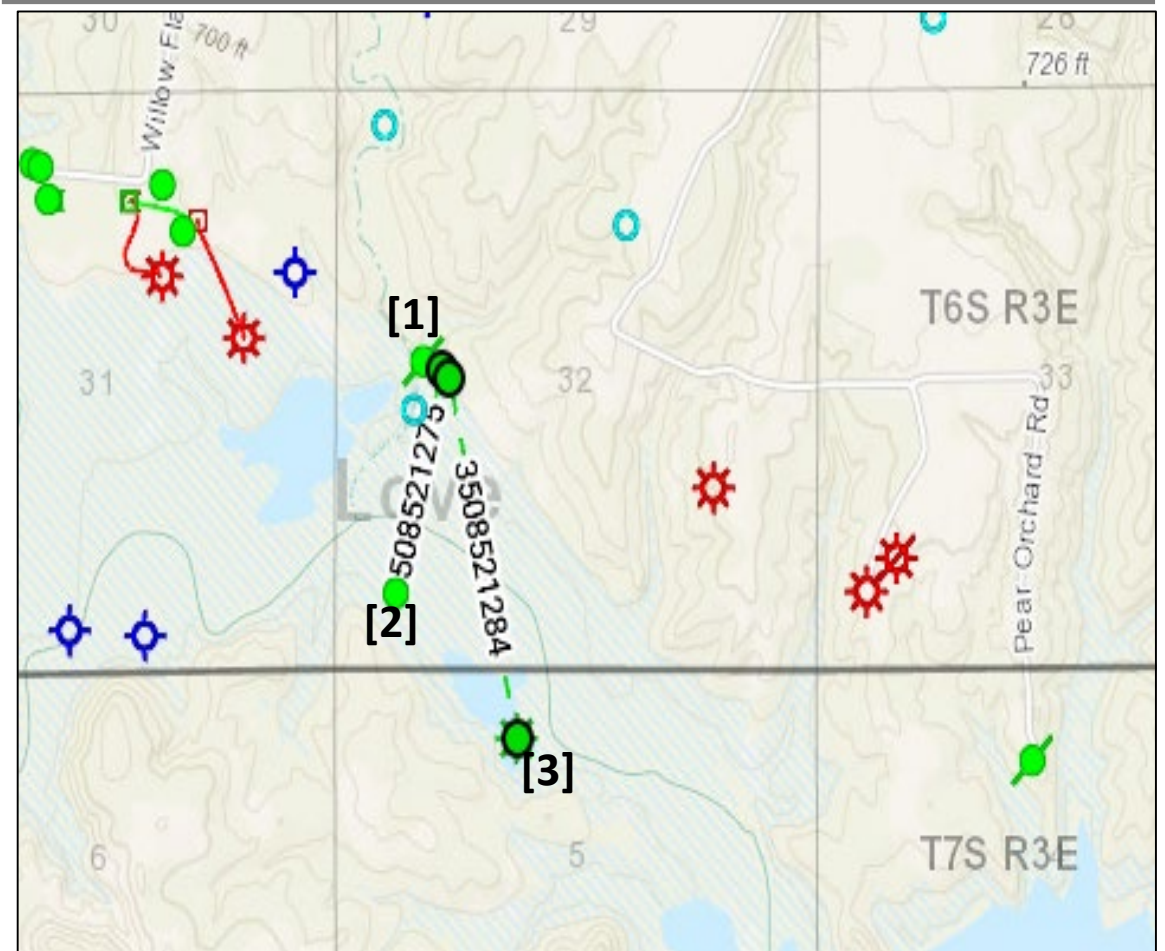
Waylon Jennings 1-5 [3] – Add ESP+pay in Upper Viola, Sycamore, & Caney Sand

- \$600k AFE potential increase production 100-200 bopd

## Economics\*



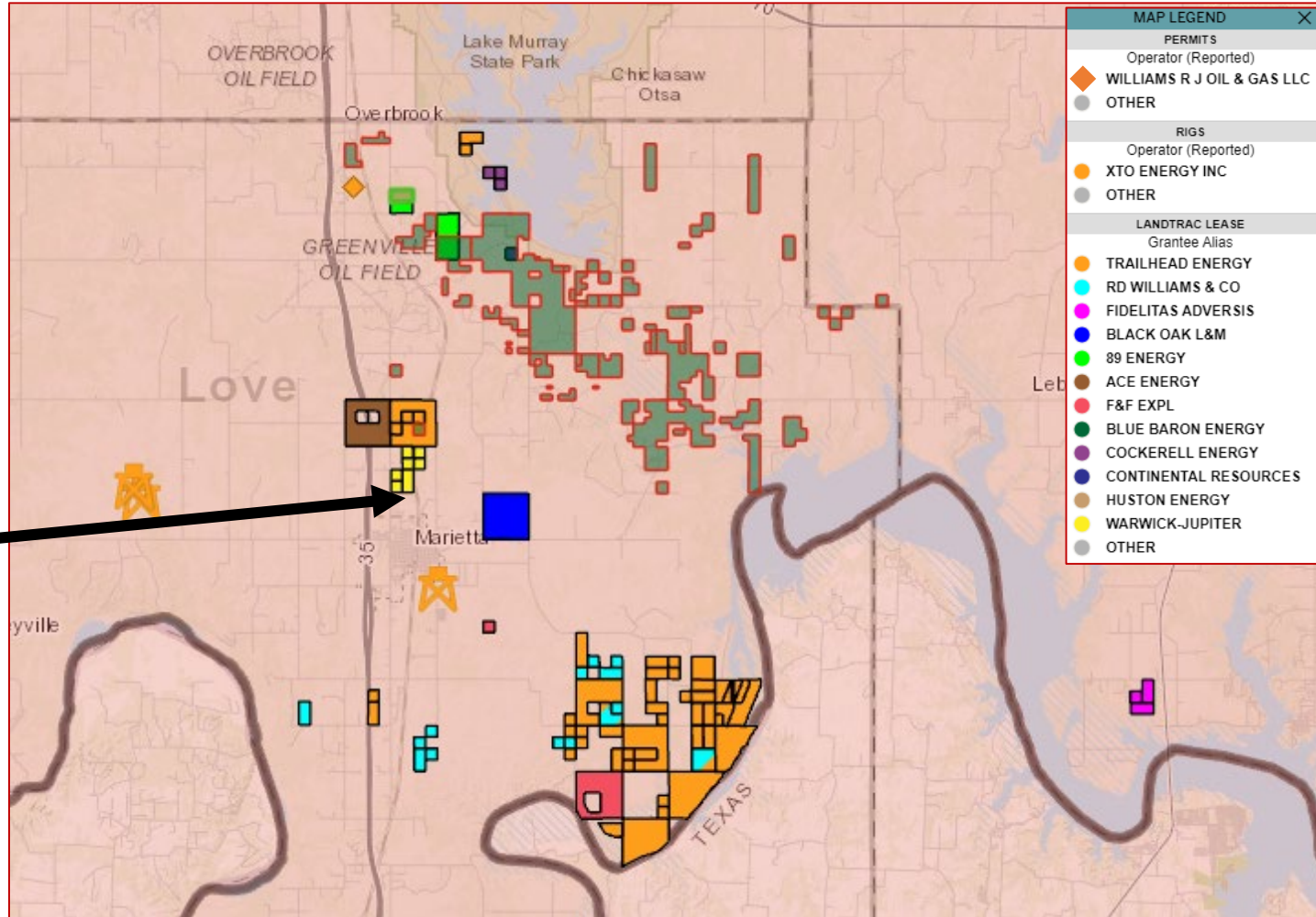
## Locations Map



Source: DrillingInfo.com

# Developmental Activity

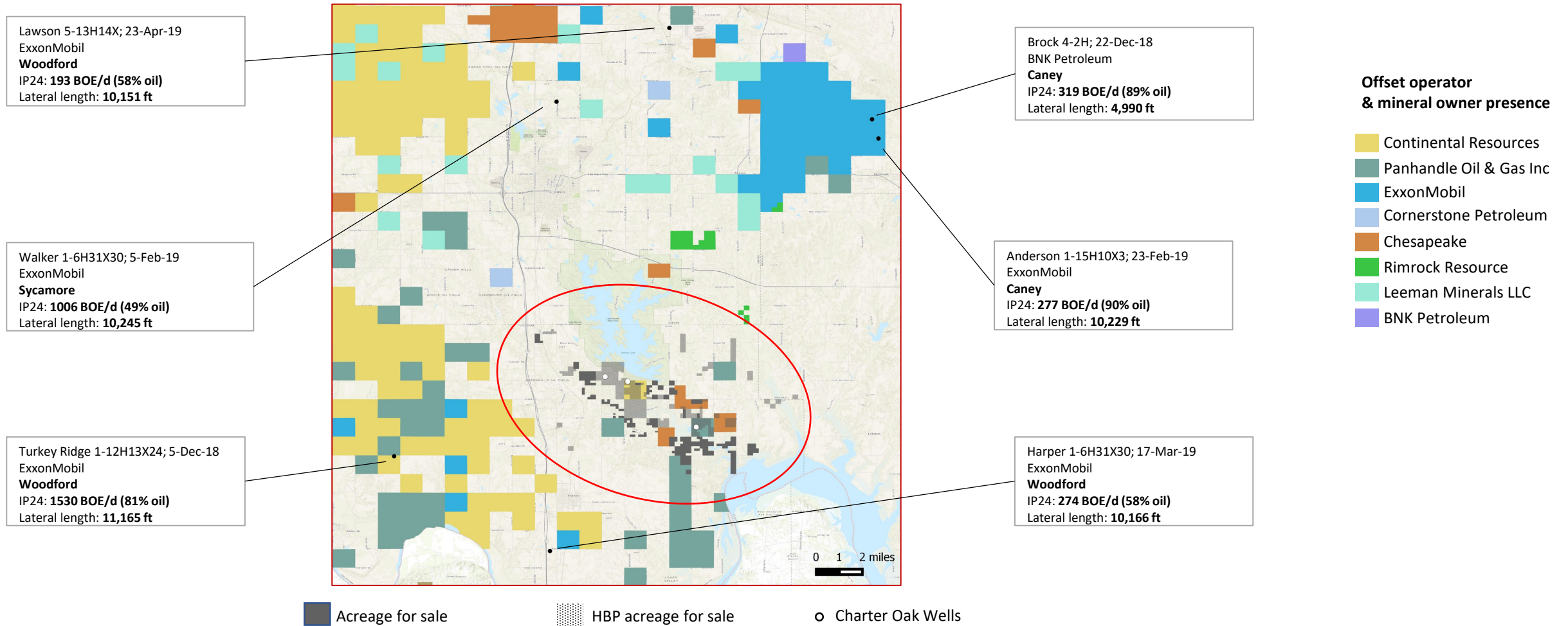
- Marketed Acreage is in a concentrated leasing location
- ExxonMobil operates 3 rigs 10 miles south west of the marketed acreage



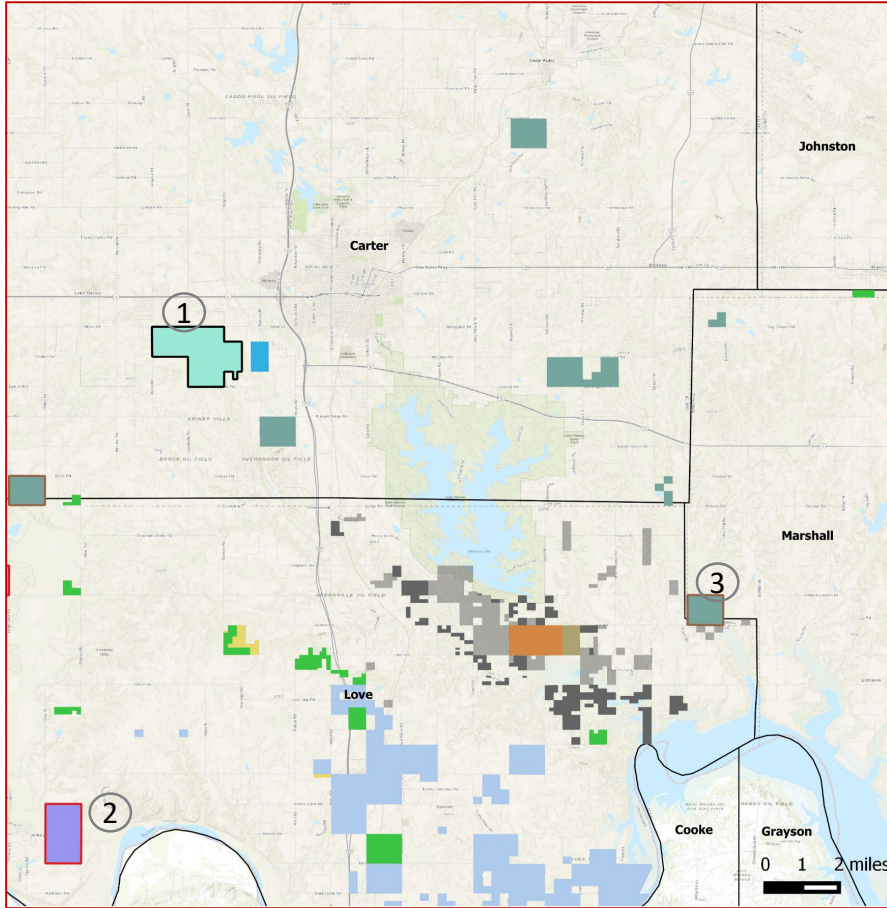
# Offset Operator and Mineral Owners

ExxonMobil's Turkey Ridge well (~11.5 miles west of acquisition opportunity) targeting Woodford formation achieved an IP24 of ~1,530 BOE/d with a lateral length of ~11,165 feet.

PE backed E&P presence include Post Oak backed Cornerstone Petroleum (\$100 million commitment ) and Rimrock Resource (\$75 million commitment)



# Private Equity Presence in the Vicinity



①

**Red Bluff Resources Operating**  
 Received an equity commitments from **Pine Brook Partners** in Aug-2015  
 Commitment (\$): **\$300 million**  
 Brief: Operated assets in STACK



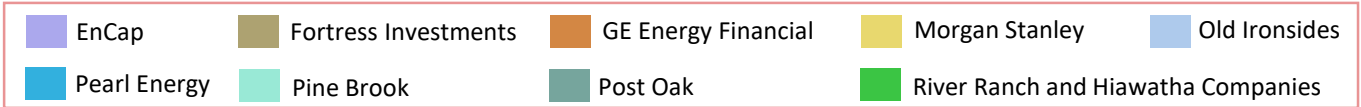
②

**Fortis Minerals LLC**  
 Backed by **EnCap Investments** in Jun-2016  
 Commitment (\$): **\$250 million**  
 Brief: Holds mineral and royalty interests in Oklahoma, Texas, Louisiana, North Dakota and New Mexico



③

**Saxet II Minerals LLC**  
 Funded by **Post Oak Energy Capital LP** in Jan-2017  
 Commitment (\$): **\$100 million**  
 Brief: Holds mineral and royalty interests in Permian, Midcontinent and Rockies


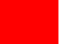


---

## Sale Process

---

- Electronic Data Room Available November 4, 2019
- Bids Due December 3, 2019
- Bid instructions available in EDR

November							December							
Su	M	T	W	Th	F	Sa	Su	M	T	W	Th	F	Sa	
					1	2	1	2	3	4	5	6	7	 EDR Open
3	4	5	6	7	8	9	8	9	10	11	12	13	14	 Bids Due
10	11	12	13	14	15	16	15	16	17	18	19	20	21	
17	18	19	20	21	22	23	22	23	24	25	26	27	28	
24	25	26	27	28	29	30	29	30	31					

---

For additional questions or information, please contact our team:

Thomas Edwards  
Business Development Executive  
[tedwards@ogclearinghouse.com](mailto:tedwards@ogclearinghouse.com)  
(626) 437-2869

Matt DaPra  
Manager-Business Development  
[mdapra@ogclearinghouse.com](mailto:mdapra@ogclearinghouse.com)  
(713) 277-7923

## Oil & Gas Asset Clearinghouse

Phone: (281) 873-4600

Email: [sales@ogclearinghouse.com](mailto:sales@ogclearinghouse.com)

The Charter Oak Production Co., LLC. ("Company") is selling certain leasehold assets in Love County, Oklahoma. Oil & Gas Asset Clearinghouse, LLC ("Clearinghouse") is the exclusive technical, marketing, and transaction advisor for this sale. The Company and Clearinghouse make no representations or warranties, either express or implied, as to the accuracy or completeness of this information or its suitability for any purpose. The sales process contemplated herein is not exclusive. The Company and Clearinghouse reserve the right to withdraw all or any portion of the assets or change all or any terms of this sales process at any time without notice to any potential purchaser.