

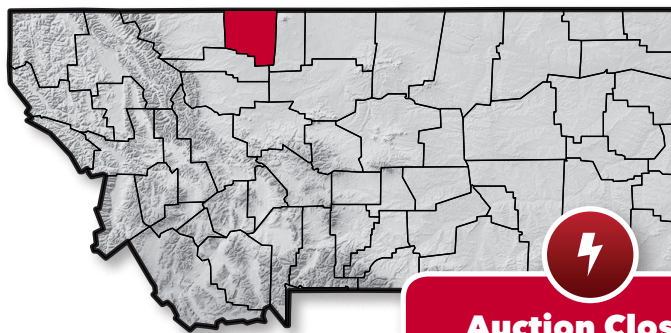
**JEPAW  
Enterprises, Inc.**

# Montana Producing Properties Package

Toole County, Montana

**NOW ACCEPTING BIDS**

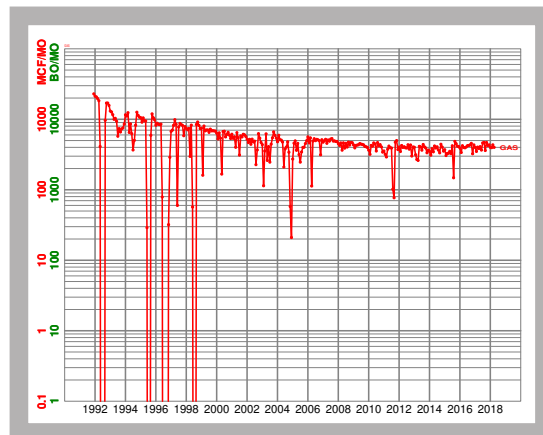
East Kevin Bow Island  
Gas Field  
Bow Island  
producing formation  
Toole County, MT



**Auction Closes  
September 12, 2018**

## AUCTION PROPERTY HIGHLIGHTS

- 3.75% royalty interest and 7.50% ORRI
- Operated by Henry A. Alme
- Average monthly net cash flow ~\$30.00 (October 2017 - March 2018)



# JEPAW Enterprises, Inc.

## Montana Producing Properties Package

Toole County, Montana

**NOW ACCEPTING BIDS**

Evaluation Data Available at



# a.m.p.

Asset Marketing Platform

Visit our continuous  
online auction at  
[www.ogclearinghouse.com](http://www.ogclearinghouse.com)

## Business Development and Negotiations Team

**Patrick DaPra**

Vice President - Negotiated Transactions  
[pdapra@ogclearinghouse.com](mailto:pdapra@ogclearinghouse.com)  
(832) 601-7655

**Amanda Novak**

Business Development  
Houston  
[anovak@ogclearinghouse.com](mailto:anovak@ogclearinghouse.com)  
(832) 601-7614

**George Soulis**

Vice President - A&D  
[gsoulis@ogclearinghouse.com](mailto:gsoulis@ogclearinghouse.com)  
(303) 570-3761

**Matt DaPra**

Manager - Business Development  
Midland  
[mdapra@ogclearinghouse.com](mailto:mdapra@ogclearinghouse.com)  
(713) 277-7923

### Contact Clearinghouse:

**Amanda Novak**

Business Development  
Houston  
[anovak@ogclearinghouse.com](mailto:anovak@ogclearinghouse.com)  
(832) 601-7614

**Patrick DaPra**

VP - Negotiated Transactions  
[pdapra@ogclearinghouse.com](mailto:pdapra@ogclearinghouse.com)  
(832) 601-7655

## OIL & GAS ASSET **CLEARINGHOUSE**

**Oil & Gas Asset Clearinghouse, LLC**

1235 North Loop West, Suite 510  
Houston, TX 77008  
(281) 873-4600

Clearinghouse has participated in the sale of over \$13.2 billion of assets. We market operated and non-operated producing working interests, overrides, royalties, minerals and non-producing leaseholds to our database of over 20,000 registered and approved buyers and sellers.

JEPAW Enterprises, Inc. ("Company") is selling certain leasehold assets in Toole County, Montana. Oil & Gas Asset Clearinghouse, LLC ("Clearinghouse") is the exclusive technical, marketing, and transaction advisor for this sale.

The Company and Clearinghouse make no representations or warranties, either expressed or implied, as to the accuracy or completeness of this information or its suitability for any purpose. The sales process contemplated herein is not exclusive. The Company and Clearinghouse reserve the right to withdraw all or any portion of the assets or change all or any terms of this sales process at any time without notice to any potential purchaser.

Securities offered through D.H. Hill Securities, LLLP, 1543 Green Oak Place, Suite 100, Kingwood, TX 77339, (832) 644-1852, member FINRA/SIPC. Oil & Gas Asset Clearinghouse, LLC and D.H. Hill Securities, LLLP are not affiliated.