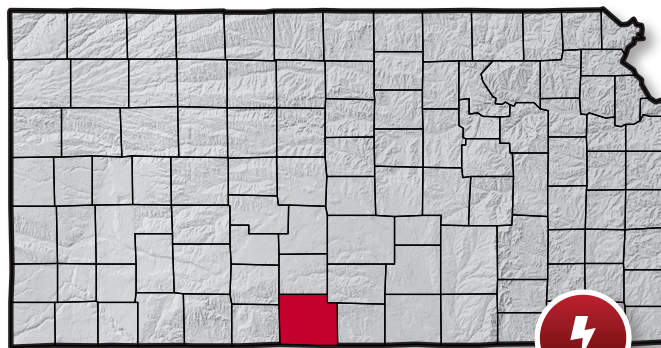


Faye G. Shaffer

Kansas Working Interest Package

SEALED BID PROCESS

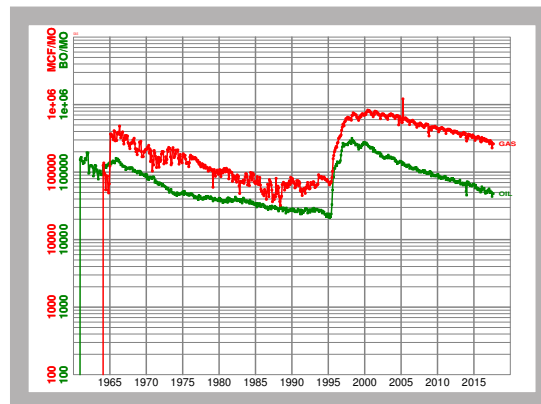
Medicine Lodge-
Boggs Field
Barber County,
Kansas



**Sealed Bids Due
January 10, 2018**

AUCTION PROPERTY HIGHLIGHTS

- Operated by Pickrell Drilling Co., Apollo Energies, Edison Operating and Pioneer Natural Resource
- Average net production ~5 MCFD
- Average monthly net cash flow ~\$409.00 (Jan - May 2017)



Faye G. Shaffer

Kansas Working Interest Package

Evaluation Data Available at



a.m.p.

Asset Marketing Platform

Data Room Now Open at
www.ogclearinghouse.com

Sealed Bids Due
January 10, 2018

Business Development and Negotiations Team

Patrick DaPra

Vice President - Negotiated Transactions
pdapra@ogclearinghouse.com
(832) 601-7655

Amanda Novak

Business Development
Houston
anovak@ogclearinghouse.com
(832) 601-7614

Matt DaPra

Manager - Business Development
Midland
mdapra@ogclearinghouse.com
(713) 277-7923

Deon Warner

President
dwarner@ogclearinghouse.com
(281) 873-4600

Contact Clearinghouse:

Patrick DaPra

VP - Negotiated Transactions
pdapra@ogclearinghouse.com
(832) 601-7655

Amanda Novak

Business Development
Houston
anovak@ogclearinghouse.com
(832) 601-7614

Faye G. Shaffer ("Company") is selling certain leasehold assets in Barber County, Kansas. Oil & Gas Asset Clearinghouse, LLC ("Clearinghouse") is the exclusive technical, marketing, and transaction advisor for this sale.

The Company and Clearinghouse make no representations or warranties, either expressed or implied, as to the accuracy or completeness of this information or its suitability for any purpose. The sales process contemplated herein is not exclusive. The Company and Clearinghouse reserve the right to withdraw all or any portion of the assets or change all or any terms of this sales process at any time without notice to any potential purchaser.

OIL & GAS ASSET **CLEARINGHOUSE**

Oil & Gas Asset Clearinghouse, LLC

1235 North Loop West, Suite 500
Houston, TX 77008
(281) 873-4600

Clearinghouse has participated in the sale of over \$13.2 billion of assets. We market operated and non-operated producing working interests, overrides, royalties, minerals and non-producing leaseholds to our database of over 20,000 registered and approved buyers and sellers.