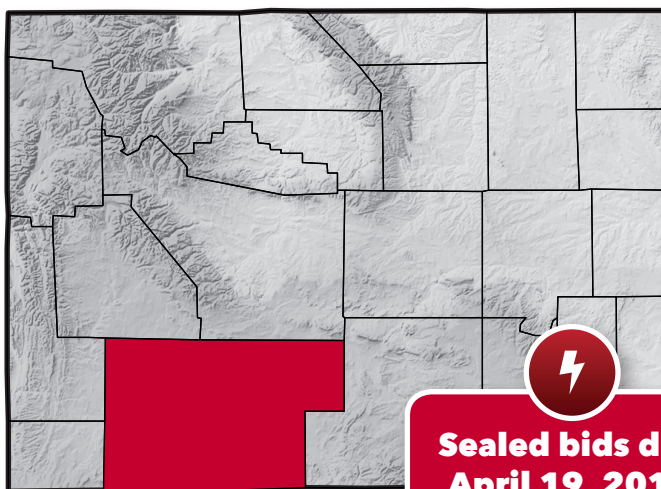




# Operated Property Package

SEALED BID PROCESS

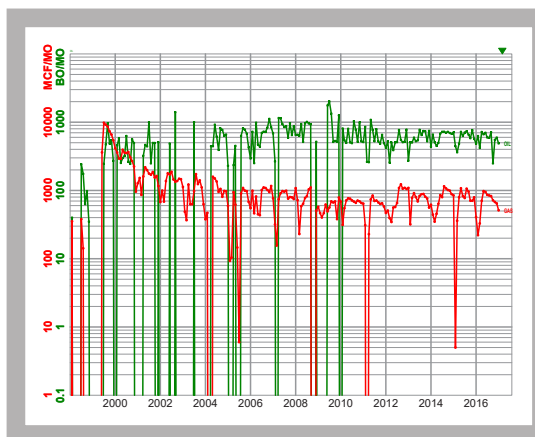
Patrick Draw Field  
Sweetwater County,  
Wyoming



**Sealed bids due  
April 19, 2017**

## OPPORTUNITY HIGHLIGHTS

- 6 active or producing wells
- 100% GWI
- 87.5% NRI
- Average monthly cashflow  
~\$19,000
- 14 net BOPD
- 18 net MCFD





## Operated Property Package

Evaluation Data Available at



**a.m.p.**

Asset Marketing Platform

Data Room Now Open at  
[www.ogclearinghouse.com](http://www.ogclearinghouse.com)

Sealed bids due April 19, 2017

## Business Development and Negotiations Team

### *Patrick DaPra*

Vice President - Negotiated Transactions  
pdapra@ogclearinghouse.com  
(832) 601-7655

### *Thomas Medlin*

Vice President - Business Development  
Oklahoma City  
tmedlin@ogclearinghouse.com  
(405) 250-0840

### *Hobby Abshier*

Business Development  
habshier@ogclearinghouse.com  
(281) 873-4600

### *Tom Campbell*

Vice President - Engineering  
tcampbell@ogclearinghouse.com  
(281) 873-4600

## Contact Clearinghouse:

### *Sales*

Sales Support  
sales@ogclearinghouse.com  
281.873.4600

### *Lynn McMaster*

Contract & Business  
Development Administrator  
lmcmaster@ogclearinghouse.com  
832-601-7636

Crown Oil & Gas Company, Inc. ("Company") is selling certain leasehold assets in Sweetwater County, Wyoming. Oil & Gas Asset Clearinghouse, LLC ("Clearinghouse") is the exclusive technical, marketing, and transaction advisor for this sale.

The Company and Clearinghouse make no representations or warranties, either expressed or implied, as to the accuracy or completeness of this information or its suitability for any purpose. The sales process contemplated herein is not exclusive. The Company and Clearinghouse reserve the right to withdraw all or any portion of the assets or change all or any terms of this sales process at any time without notice to any potential purchaser.

## OIL & GAS ASSET **CLEARINGHOUSE**

Oil & Gas Asset Clearinghouse, LLC

1235 North Loop West, Suite 510  
Houston, TX 77008

(281) 873-4600

Clearinghouse has participated in the sale of over \$13.2 billion. We market operated and non-operated producing working interests, overrides, royalties, minerals and non-producing leaseholds to our database of over 20,000 registered and approved buyers and sellers.